

LEA Name : Tredyffrin-Easttown SD
Address : West Valley Business Center
Wayne , PA 19087

County : Chester
AUN Number : 124157802
LEA Type : SD

Annual Financial Report
Accuracy Certification Statement

For Fiscal Year Ending
6/30/2022

Pennsylvania Department of Education
&
Office of Comptroller Operations

PDE-2056: Intermediate Unit
PDE-2057: School District, AVTS/CTC, Charter School,
and Special Program Jointure

CERTIFICATION: By signing this page I agree that the electronic data submitted is a complete and accurate statement of the financial operations and status of the local education agency for the fiscal year. It has been prepared in accordance with generally accepted accounting principles and established Commonwealth of PA reporting guidelines.

Chief School Administrator Signature

Date

Board Secretary Signature

Date

Deborah L Klahold

Contact Person

klaholdd@tesd.net

Contact Person E-mail Address

(610)240-1933

Ext :

Contact Person Telephone Number

Contact Person Fax Number

Audit Certification
Annual Financial Report:
For Fiscal Year Ending **6/30/2022**
(Pursuant to PA School Code Section 218(b))

LEA Name : Tredyffrin-Easttown SD
AUN Number : 124157802
County : Chester

Audit Certification Due: 12/31/2022

This certification is applicable to the Annual Financial Report data submitted through the Consolidated Financial Reporting System (CFRS).

CERTIFICATION: By signing this page I agree that the financial statements of the school have been properly audited as noted above pursuant to Article XXIV, and in the auditor's professional opinion, the Annual Financial Report (PDE-2057) submitted through CFRS is materially consistent with the audited financial statements.

Chief School Administrator

Board Secretary

Signature

Date

Signature

Date

Deborah L Klahold

Contact Person

klaholdd@tesd.net

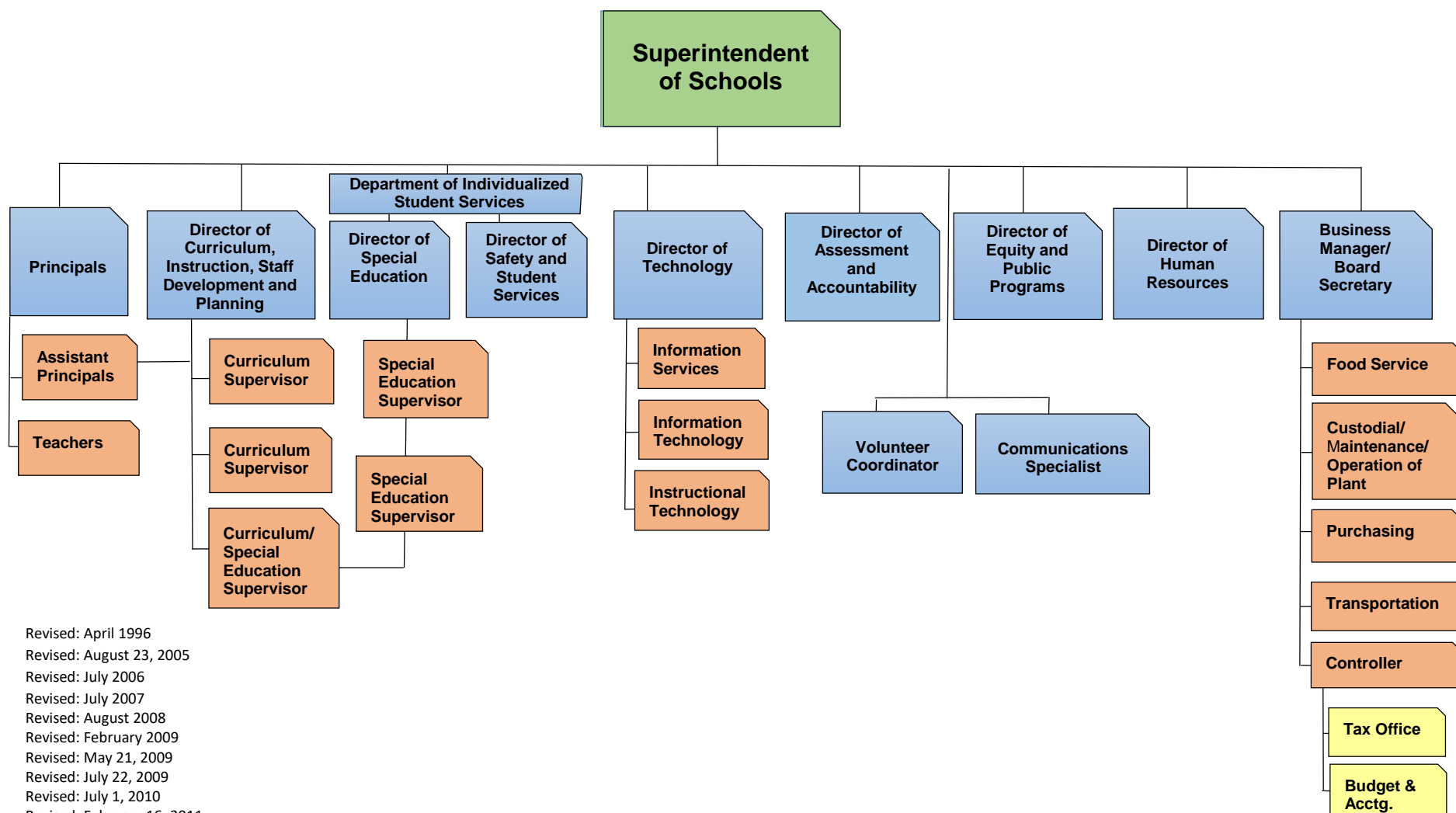
Contact Person E-mail Address

(610)240-1933

Ext :

Contact Person Telephone Number

Contact Person Fax Number



Revised: April 1996
 Revised: August 23, 2005
 Revised: July 2006
 Revised: July 2007
 Revised: August 2008
 Revised: February 2009
 Revised: May 21, 2009
 Revised: July 22, 2009
 Revised: July 1, 2010
 Revised: February 16, 2011
 Revised: December 9, 2011
 Revised: May 30, 2012
 Revised: May 20, 2013
 Revised: November 12, 2015
 Revised: July 1, 2017
 Revised: July 2019
 Revised: September 3, 2019
 Revised: August 31, 2021
 Tredyffrin Easttown School District

Capital Assets

Capital Asset Additions

Purchased capital assets greater than \$5,000 should be recorded at historical/original cost. The cost of a capital asset should include capitalized interest and ancillary charges necessary to place the asset into its intended location and condition for use. Ancillary charges include costs that are directly attributable to asset acquisition – such as freight and transportation charges, site preparations cost, and professional fees.

Purchases less than \$5,000 that are consumed within the fiscal year are treated as supplies and coded to the supply objects prescribed by the Pennsylvania Public School Accounting Manual.

Capital assets should be depreciated over their estimated useful lives as determined for each asset class. Land, and some land improvements are considered inexhaustible, and are therefore not subject to depreciation.

If determining historical cost is not practical due to inadequate records, reporting should be based on estimates of the original cost at the date of construction or purchase.

Capital assets records must include the acquisition date, cost, estimated useful life and method of depreciation for each capital asset classification and group.

Due to change in technology, computer software is considered a supply and is expensed at the time of purchase.

Donated capital assets must be reported as fair market value plus ancillary charges, if any, at the time of donation. Donated assets are recorded as contributed capital and depreciated over their estimated useful lives, as determined for each asset class. If determining historical costs is not practical due to inadequate records, reporting should be based on estimates of fair market value at the date of donation.

Infrastructure assets are long-lived capital assets that normally are stationary in nature and can normally be preserved for a significantly greater number of years than most capital assets. Infrastructure includes parking lots and sidewalks. Infrastructure assets should be depreciated over their estimated useful lives.

Infrastructure asset routine repairs and maintenance cost are charged to operations as incurred. Expenditures that extend the estimated useful life of the infrastructure are capitalized as part of the asset and depreciated over the newly established estimated useful life.

Works of art, historical treasures and similar assets should be capitalized at their historical cost or fair value at date of donation (estimated if necessary) whether they are held as individual items or in a collection. Capitalized collections or individual items that are exhaustible should be depreciated over their estimated useful lives. Depreciation is not required for collections or individual items that are inexhaustible.

Capital Asset Disposal

When capital assets are sold, a calculation of gain or loss on disposal is required. The calculation is based upon the amount of proceeds received less the net book value (cost of the capital asset less accumulated depreciation taken).

When capital assets are traded-in, the value of the trade is part of the cost of the newly acquired asset. The costs and accumulated depreciation of the trade-in asset must be removed from the capital asset accounts. Any gain or loss resulting from the disposition of the asset will be recognized as a gain or loss on disposal in the entity-wide operating statement.

Asset Acquired by Capital Lease

Assets acquired by capital lease are recorded at the net present value of the future minimum lease payments. A corresponding liability is established at this time. Assets acquired under the terms of capital leases are depreciated using the straight-line method over the estimated useful lives designated for the asset class.

Repairs and Maintenance

Extraordinary repairs greater than \$5,000 extending the estimated useful life of an asset beyond one (1) year should be capitalized, and the estimated useful life of the entire asset for depreciation purposes should be revised. Routine repairs, maintenance and parts purchased to keep the asset in working condition are charged to expense as incurred whether they are greater than or equal to \$5,000

Depreciation Useful Life Table:

Capital Assets are to be depreciated per the following Depreciation Useful Life Table:

Asset Class	Years	Examples
Outdoor Equipment & Signs	20	Stationary Playground/Athletic Equipment & Fixtures
Machinery & Tools	10	Pottery, Kitchen & Health Room Equipment
Furniture, Equipment & Accessories	5-10	Custodial Equipment/Vacuums, Science/Engineering Equipment, Whiteboards
Business Machines	5	Copiers, Postage Machines
Communication Systems	5	Telephones, Cellphones, Telephonic Operational Systems, Intercoms
Technology, Information Systems and Network Hardware	3-5	Computers, Printers, Scanners, iPads, Other handheld computer devices, Servers, Routers, Switches
Audiovisual Equipment & Accessories	7	Televisions, Cameras, Camcorders, Projectors, Smart Boards
Licensed Vehicles	8	Automobiles, Trucks
Contractor Equipment	10	Front-End Loaders, Large Tractors
Ground & Maintenance Equipment	7	Ground & Maintenance Equipment, Mowers, Small Tractors
School Buildings	40	School Buildings
Land/Site Improvements	20	Sidewalks, Walk-Ways, Parking Lots, Athletic Fields, Grading
Portable Structures	20	Portable Gymnasium Stands, Modular Classrooms
Interior/Exterior Construction	20	Completed Construction
Electrical/Plumbing	20	Electrical/Plumbing Installations
HVAC Systems	20	HVAC Installations
Sprinkler/Fire/Alarm Systems	20	Sprinkler/Fire/Alarm Installations
Roofing	20	Roofing
Stage & Auditorium	20	Stage & Auditorium/Stage Curtain
Carpeting & Vinyl Flooring (New/Replacement)	5	Carpeting & Flooring Installations
Classroom Desks	10	Classroom Desks
Classroom Chairs	10	Classroom Chairs
Multi-Media Materials	5	Multi-Media Materials
Athletic Equipment (Portable)	7	Gym/Football Equipment, Weight Machines
Uniforms	5	Athletic, Musical Uniforms
Musical Instruments	10	Piano, Wind, Brass, Percussion Instruments
Land	N/A	Land Acquisition

<u>Val Number</u>	<u>Description</u>	<u>Justification</u>
42330	Expenditure Detail: AFR amount must equal or exceed PDE FAI System amount. 1000-562, AFR Exp Detail: \$814,274.46 1000-562, PDE FAI System: \$860,212.16	Our records are on an accrual basis and FAI is on the cash basis. Our accruals were higher in 2021 than in 2022; therefore, the AFR is lower than the PDE FAI system.
50420	SESS - 2150 Speech Pathology and Audiology Services: SESS Schedule amounts for Special Education vary from prior year by 40% or more. Correct the data or enter a justification. SESS Schedule 2150: \$836.93 Prior Year SESS Schedule 2150: \$533.02	The district purchased updated materials for all 8 buildings which increased our costs.
50440	SESS - 2260 Instruction and Curriculum Development Services: SESS Schedule amounts for Special Education vary from prior year by 40% or more. Correct the data or enter a justification. SESS Schedule 2260: \$183,616.91 Prior Year SESS Schedule 2260: \$316,909.85	In 2021, \$581,211.26 of ESSER II funds were spent on salaries and benefits to provide instruction and Curriculum Development to deliver virtual instruction.
50470	SESS - 2440 Nursing Services: SESS Schedule amounts for Special Education vary from prior year by 40% or more. Correct the data or enter a justification. SESS Schedule 2440: \$170,296.53 Prior Year SESS Schedule 2440: \$63,500.49	For 21-22, a student that required nursing services returned from virtual learning, and another student that previously utilized private nursing required district nursing services.

LEA : 124157802 Tredyffrin-Easttown SD

Printed 12/5/2022 9:01:14 AM

Amounts Expressed in Whole Dollars		<u>General Fund</u> <u>(10)</u>	<u>Student Sponsored</u> <u>Activity Fund</u> <u>(21)</u>	<u>Public Purpose Trust</u> <u>(27)</u>	<u>Other Compt Approved</u> <u>(28)</u>	<u>Athletic / Activity</u> <u>(29)</u>
Assets And Deferred Outflows Of Resources						
Assets						
0100	Cash and Cash Equivalents	18,611,015				
0110	Investments	41,713,296				
0120	Taxes Receivable	1,851,841				
0130	Due From Other Funds	150,159				
0141	Due From Other Governments					
0142	State Revenue Receivable	4,812,973				
0143	Federal Revenue Receivable	1,301,284				
0145	Other Intergovernmental Revenue Receivable					
0146	Due from Primary Government					
0147	Due from Component Unit					
0150	Other Receivables	183,442				
0170	Inventories					
0180	Prepaid Expenses (Expenditures)	43,575				
0190	Other Current Assets					
Total Assets		\$68,667,585				
0910	Deferred Outflows of Resources					
Total Assets And Deferred Outflows Of Resources		\$68,667,585				

LEA : 124157802 Tredyffrin-Easttown SD

Printed 12/5/2022 9:01:14 AM

Amounts Expressed in Whole Dollars		<u>Capital Reserve (690.</u> <u>1850)</u> <u>(31)</u>	<u>Capital Reserve (1431)</u> <u>(32)</u>	<u>Other Capital Projects</u> <u>Fund</u> <u>(39)</u>	<u>Debt Service</u> <u>(40)</u>	<u>Permanent</u> <u>(90)</u>
Assets And Deferred Outflows Of Resources						
Assets						
0100	Cash and Cash Equivalents		2,008,451	18,027,369		
0110	Investments		998,322			
0120	Taxes Receivable					
0130	Due From Other Funds		7,000,000			
0141	Due From Other Governments					
0142	State Revenue Receivable					
0143	Federal Revenue Receivable					
0145	Other Intergovernmental Revenue Receivable					
0146	Due from Primary Government					
0147	Due from Component Unit					
0150	Other Receivables		1,438	20,442		
0170	Inventories					
0180	Prepaid Expenses (Expenditures)					
0190	Other Current Assets					
Total Assets			\$10,008,211	\$18,047,811		
0910	Deferred Outflows of Resources					
Total Assets And Deferred Outflows Of Resources			\$10,008,211	\$18,047,811		

LEA : 124157802 Tredyffrin-Easttown SD

Printed 12/5/2022 9:01:14 AM

Amounts Expressed in Whole Dollars		<u>Total Governmental</u>
		<u>Funds</u>
Assets And Deferred Outflows Of Resources		
Assets		
0100 Cash and Cash Equivalents	38,646,835	
0110 Investments	42,711,618	
0120 Taxes Receivable	1,851,841	
0130 Due From Other Funds	7,150,159	
0141 Due From Other Governments		
0142 State Revenue Receivable	4,812,973	
0143 Federal Revenue Receivable	1,301,284	
0145 Other Intergovernmental Revenue Receivable		
0146 Due from Primary Government		
0147 Due from Component Unit		
0150 Other Receivables	205,322	
0170 Inventories		
0180 Prepaid Expenses (Expenditures)	43,575	
0190 Other Current Assets		
Total Assets	\$96,723,607	
0910 Deferred Outflows of Resources		
Total Assets And Deferred Outflows Of Resources	\$96,723,607	

Amounts Expressed in Whole Dollars	<u>General Fund</u> <u>(10)</u>	<u>Student Sponsored</u> <u>Activity Fund</u> <u>(21)</u>	<u>Public Purpose Trust</u> <u>(27)</u>	<u>Other Compt Approved</u> <u>(28)</u>	<u>Athletic / Activity</u> <u>(29)</u>
Liabilities And Deferred Inflows Of Resources And Fund Balances					
Liabilities					
0400 Due to Other Funds	6,007,964				
0411 Due to Other Governments					
0412 Due to Primary Government					
0413 Due to Component Unit					
0420 Accounts Payable	4,097,818				
0430 Contracts Payable					
0440 Current Portion of Long-Term Debt					
0450 Short-Term Payables					
0461 Accrued Salaries and Benefits	1,250,244				
0462 Payroll Deductions and Withholding	23,265,479				
0480 Unearned Revenues					
0490 Other Current Liabilities					
Total Liabilities	\$34,621,505				
0950 Deferred Inflows of Resources	1,491,291				
Fund Balances					
0810 Nonspendable Fund Balance	43,575				
0820 Restricted Fund Balance					
0830 Committed Fund Balance	32,281,271				
0840 Assigned Fund Balance	229,943				
0850 Unassigned Fund Balance					
Total Fund Balances	\$32,554,789				
Total Liabilities, Deferred Inflows Of Resources And Fund Balances	\$68,667,585				

LEA : 124157802 Tredyffrin-Easttown SD

Printed 12/5/2022 9:01:14 AM

Amounts Expressed in Whole Dollars		<u>Capital Reserve (690.</u> <u>1850)</u> <u>(31)</u>	<u>Capital Reserve (1431)</u> <u>(32)</u>	<u>Other Capital Projects</u> <u>Fund</u> <u>(39)</u>	<u>Debt Service</u> <u>(40)</u>	<u>Permanent</u> <u>(90)</u>
Liabilities And Deferred Inflows Of Resources And Fund Balances						
Liabilities						
0400	Due to Other Funds			992,036		
0411	Due to Other Governments					
0412	Due to Primary Government					
0413	Due to Component Unit					
0420	Accounts Payable			2,278,464		
0430	Contracts Payable					
0440	Current Portion of Long-Term Debt					
0450	Short-Term Payables					
0461	Accrued Salaries and Benefits					
0462	Payroll Deductions and Withholding					
0480	Unearned Revenues					
0490	Other Current Liabilities					
Total Liabilities				\$3,270,500		
0950	Deferred Inflows of Resources					
Fund Balances						
0810	Nonspendable Fund Balance					
0820	Restricted Fund Balance		10,008,211	14,777,311		
0830	Committed Fund Balance					
0840	Assigned Fund Balance					
0850	Unassigned Fund Balance					
Total Fund Balances			\$10,008,211	\$14,777,311		
Total Liabilities, Deferred Inflows Of Resources And Fund Balances			\$10,008,211	\$18,047,811		

LEA : 124157802 Tredyffrin-Easttown SD

Printed 12/5/2022 9:01:14 AM

Amounts Expressed in Whole Dollars		<u>Total Governmental Funds</u>
Liabilities And Deferred Inflows Of Resources And Fund Balances		
Liabilities		
0400 Due to Other Funds		7,000,000
0411 Due to Other Governments		
0412 Due to Primary Government		
0413 Due to Component Unit		
0420 Accounts Payable		6,376,282
0430 Contracts Payable		
0440 Current Portion of Long-Term Debt		
0450 Short-Term Payables		
0461 Accrued Salaries and Benefits		1,250,244
0462 Payroll Deductions and Withholding		23,265,479
0480 Unearned Revenues		
0490 Other Current Liabilities		
Total Liabilities		\$37,892,005
0950 Deferred Inflows of Resources		1,491,291
Fund Balances		
0810 Nonspendable Fund Balance		43,575
0820 Restricted Fund Balance		24,785,522
0830 Committed Fund Balance		32,281,271
0840 Assigned Fund Balance		229,943
0850 Unassigned Fund Balance		
Total Fund Balances		\$57,340,311
Total Liabilities, Deferred Inflows Of Resources And Fund Balances		\$96,723,607

Amounts Expressed in Whole Dollars	<u>General Fund</u> <u>(10)</u>	<u>Student Sponsored</u> <u>Activity Fund</u> <u>(21)</u>	<u>Public Purpose Trust</u> <u>(27)</u>	<u>Other Compt Approved</u> <u>(28)</u>	<u>Athletic / Activity</u> <u>(29)</u>
Revenues					
6000 Revenue from Local Sources	133,225,612				
7000 Revenue from State Sources	23,848,128				
8000 Revenue from Federal Sources	1,343,229				
Total Revenues	\$158,416,969				
Expenditures					
1000 Instruction	97,539,737				
2000 Support Services	44,537,968				
3000 Operation of Non-Instructional Services	2,010,504				
4000 Facilities Acquisition, Construction and Improvement Services					
5110 Debt Service	6,505,886				
5130 Refund of Prior Year Revenues / Receipts					
5140 Leases	555,769				
Total Expenditures	\$151,149,864				
Excess (Deficiency) Of Revenues Over Expenditures	\$7,267,105				
Other Financing Sources (Uses)					
9110 Face Value of Bonds Issued					
9120 Proceeds from Refunding of Bonds					
9130 Bond Premiums					
9200 Proceeds from Extended-Term Financing and Leases					
9300 Interfund Transfers - IN					
9400 Sale of or Compensation for Loss of Fixed Assets					
9710 Transfers from Component Units					
9720 Transfers from Primary Governments					
9910 Other Financing Sources Not Listed in the 9000 Series					
9990 Insurance Recoveries					
5120 Debt Service – Refunded Bonds					
5150 Bond Discounts					
5200 Interfund Transfers – Out	7,000,000				
5300 Transfers Out to Component Units/Primary Governments					
Total Other Financing Sources (Uses)	(\$7,000,000)				

Amounts Expressed in Whole Dollars		<u>Capital Reserve (690.1850)</u> <u>(31)</u>	<u>Capital Reserve (1431)</u> <u>(32)</u>	<u>Other Capital Projects</u> <u>Fund</u> <u>(39)</u>	<u>Debt Service</u> <u>(40)</u>	<u>Permanent</u> <u>(90)</u>
Revenues						
6000	Revenue from Local Sources		4,424	43,537		
7000	Revenue from State Sources					
8000	Revenue from Federal Sources					
Total Revenues			\$4,424	\$43,537		
Expenditures						
1000	Instruction					
2000	Support Services			920,876		
3000	Operation of Non-Instructional Services					
4000	Facilities Acquisition, Construction and Improvement Services			16,411,721		
5110	Debt Service					
5130	Refund of Prior Year Revenues / Receipts					
5140	Leases					
Total Expenditures				\$17,332,597		
Excess (Deficiency) Of Revenues Over Expenditures			\$4,424	(\$17,289,060)		
Other Financing Sources (Uses)						
9110	Face Value of Bonds Issued			26,900,000		
9120	Proceeds from Refunding of Bonds					
9130	Bond Premiums			4,374,716		
9200	Proceeds from Extended-Term Financing and Leases			700,654		
9300	Interfund Transfers - IN		7,000,000			
9400	Sale of or Compensation for Loss of Fixed Assets			91,000		
9710	Transfers from Component Units					
9720	Transfers from Primary Governments					
9910	Other Financing Sources Not Listed in the 9000 Series					
9990	Insurance Recoveries					
5120	Debt Service – Refunded Bonds					
5150	Bond Discounts					
5200	Interfund Transfers – Out					
5300	Transfers Out to Component Units/Primary Governments					
Total Other Financing Sources (Uses)			\$7,000,000	\$32,066,370		

Amounts Expressed in Whole Dollars		<u>Total Governmental Funds</u>
Revenues		
6000	Revenue from Local Sources	133,273,573
7000	Revenue from State Sources	23,848,128
8000	Revenue from Federal Sources	1,343,229
Total Revenues		\$158,464,930
Expenditures		
1000	Instruction	97,539,737
2000	Support Services	45,458,844
3000	Operation of Non-Instructional Services	2,010,504
4000	Facilities Acquisition, Construction and Improvement Services	16,411,721
5110	Debt Service	6,505,886
5130	Refund of Prior Year Revenues / Receipts	
5140	Leases	555,769
Total Expenditures		\$168,482,461
Excess (Deficiency) Of Revenues Over Expenditures		(\$10,017,531)
Other Financing Sources (Uses)		
9110	Face Value of Bonds Issued	26,900,000
9120	Proceeds from Refunding of Bonds	
9130	Bond Premiums	4,374,716
9200	Proceeds from Extended-Term Financing and Leases	700,654
9300	Interfund Transfers - IN	7,000,000
9400	Sale of or Compensation for Loss of Fixed Assets	91,000
9710	Transfers from Component Units	
9720	Transfers from Primary Governments	
9910	Other Financing Sources Not Listed in the 9000 Series	
9990	Insurance Recoveries	
5120	Debt Service – Refunded Bonds	
5150	Bond Discounts	
5200	Interfund Transfers – Out	7,000,000
5300	Transfers Out to Component Units/Primary Governments	
Total Other Financing Sources (Uses)		\$32,066,370

Amounts Expressed in Whole Dollars		<u>General Fund</u> <u>(10)</u>	<u>Student Sponsored</u> <u>Activity Fund</u> <u>(21)</u>	<u>Public Purpose Trust</u> <u>(27)</u>	<u>Other Compt Approved</u> <u>(28)</u>	<u>Athletic / Activity</u> <u>(29)</u>
Special And Extraordinary Items						
9920	Special Items – Gains					
9930	Extraordinary Items – Gains					
5520	Special Items – Losses					
5530	Extraordinary Items – Losses					
Net Change In Fund Balances		\$267,105				
Fund Balance						
0001	Fund Balance - Beginning of Fiscal Year	32,287,684				
Fund Balance - End Of Year		\$32,554,789				

Amounts Expressed in Whole Dollars		<u>Capital Reserve (690.</u> <u>1850)</u> <u>(31)</u>	<u>Capital Reserve (1431)</u> <u>(32)</u>	<u>Other Capital Projects</u> <u>Fund</u> <u>(39)</u>	<u>Debt Service</u> <u>(40)</u>	<u>Permanent</u> <u>(90)</u>
Special And Extraordinary Items						
9920	Special Items – Gains					
9930	Extraordinary Items – Gains					
5520	Special Items – Losses					
5530	Extraordinary Items – Losses					
Net Change In Fund Balances			\$7,004,424	\$14,777,310		
Fund Balance						
0001	Fund Balance - Beginning of Fiscal Year		3,003,788	1		
Fund Balance - End Of Year			\$10,008,212	\$14,777,311		

Amounts Expressed in Whole Dollars		<u>Total Governmental</u> <u>Funds</u>
Special And Extraordinary Items		
9920	Special Items – Gains	
9930	Extraordinary Items – Gains	
5520	Special Items – Losses	
5530	Extraordinary Items – Losses	
Net Change In Fund Balances		\$22,048,839
Fund Balance		
0001	Fund Balance - Beginning of Fiscal Year	35,291,473
Fund Balance - End Of Year		\$57,340,312

LEA : 124157802 Tredyffrin-Easttown SD

Printed 12/5/2022 9:01:24 AM

Amounts Expressed in Whole Dollars	<u>Food Service</u> <u>(51)</u>	<u>Child Care</u> <u>Operations</u> <u>(52)</u>	<u>Other Enterprise</u> <u>(58)</u>	<u>TOTAL</u>	<u>Internal Service</u> <u>(60)</u>
Assets And Deferred Outflows Of Resources					
Current Assets					
0100 Cash and Cash Equivalents	172,148			172,148	
0110 Investments					
0130 Due From Other Funds					
0141 Due From Other Governments					
0142 State Revenue Receivable	3,351			3,351	
0143 Federal Revenue Receivable	123,134			123,134	
0146 Due from Primary Government					
0147 Due from Component Unit					
0150 Other Receivables	6,144			6,144	
0170 Inventories	34,134			34,134	
0180 Prepaid Expenses (Expenditures)					
0190 Other Current Assets					
Total Current Assets	\$338,911			\$338,911	
Noncurrent Assets					
0211 Land					
0212 Site Improvements (Net)					
0220 Buildings and Building Improvements (Net)					
0230 Machinery, Equipment and Furniture (Net)	83,189			83,189	
0250 Construction in Progress					
0260 Long Term Prepayments					
0290 Other Noncurrent Assets					
Total Noncurrent Assets	\$83,189			\$83,189	
0910 Deferred Outflows of Resources	622,645			622,645	
Total Assets And Deferred Outflows Of Resources	\$1,044,745			\$1,044,745	

Amounts Expressed in Whole Dollars	<u>Food Service</u> <u>(51)</u>	<u>Child Care</u> <u>Operations</u> <u>(52)</u>	<u>Other Enterprise</u> <u>(58)</u>	<u>TOTAL</u>	<u>Internal Service</u> <u>(60)</u>
Liabilities And Deferred Inflows Of Resources And Net Position					
Current Liabilities					
0400 Due to Other Funds	150,159			150,159	
0411 Due to Other Governments					
0413 Due to Component Unit					
0420 Accounts Payable					
0430 Contracts Payable					
0440 Current Portion of Long-Term Debt					
0450 Short-Term Payables					
0461 Accrued Salaries and Benefits	41,649			41,649	
0462 Payroll Deductions and Withholding	17,749			17,749	
0480 Unearned Revenues	84,767			84,767	
0490 Other Current Liabilities					
Total Current Liabilities	\$294,324			\$294,324	
Noncurrent Liabilities					
0510 Bonds Payable					
0520 Extended-Term Financing Agreements Payable					
0530 Lease Obligations					
0540 Accumulated Compensated Absences	79,010			79,010	
0550 Authority Lease Obligations					
0560 Other Post-Employment Benefits (OPEB)	558,386			558,386	
0570 Net Pension Liability	2,622,567			2,622,567	
0599 Other Noncurrent Liabilities					
Total Noncurrent Liabilities	\$3,259,963			\$3,259,963	
Total Liabilities	\$3,554,287			\$3,554,287	
0950 Deferred Inflows of Resources	504,685			504,685	
Net Position					
0791 Net Investment in Capital Assets	83,189			83,189	
0008 Restricted Net Position (0792 – 0798)					
0799 Unrestricted Net Position	(3,097,416)			(3,097,416)	
Total Net Position	(\$3,014,227)			(\$3,014,227)	
Total Liabilities And Deferred Inflows Of Resources And Net Position	\$1,044,745			\$1,044,745	

Amounts Expressed in Whole Dollars		<u>Food Service</u> <u>(51)</u>	<u>Child Care Operations</u> <u>(52)</u>	<u>Other Enterprise</u> <u>(58)</u>	<u>TOTAL</u>	<u>Internal Service</u> <u>(60)</u>
Operating Revenues						
6600	Food Service Revenue	758,915			758,915	
0071	Charges for Services					
0072	Other Operating Revenue					
Total Operating Revenues		\$758,915			\$758,915	
Operating Expenses						
100	Personnel Services – Salaries	962,415			962,415	
200	Personnel Services – Employee Benefits	670,175			670,175	
300	Purchased Professional and Technical Services					
400	Purchased Property Services	61,694			61,694	
500	Other Purchased Services	100			100	
600	Supplies	1,121,954			1,121,954	
740	Depreciation	25,800			25,800	
810	Dues and Fees	776			776	
880	Refunds of Prior Years' Receipts					
890	Miscellaneous Expenditures					
Total Operating Expenses		\$2,842,914			\$2,842,914	
Operating Income (Loss)		(\$2,083,999)			(\$2,083,999)	
Non Operating Revenues (Expenses)						
6500	Earnings on Investments	1,882			1,882	
6920	Contributions and Donations from Private Sources					
6930	Gains or Losses on Sale of Fixed Assets					
6991	Refunds of a Prior Year Expenditure					
7000	Revenue from State Sources	255,529			255,529	
8000	Revenue from Federal Sources	2,373,712			2,373,712	
9990	Insurance Recoveries					
820	Claims and Judgments Against the LEA					
830	Interest					
TOTAL Non Operating Revenues (Expenses)		\$2,631,123			\$2,631,123	
Income (Loss) Before Contributions And Transfers		\$547,124			\$547,124	

Amounts Expressed in Whole Dollars	<u>Food Service</u> <u>(51)</u>	<u>Child Care Operations</u> <u>(52)</u>	<u>Other Enterprise</u> <u>(58)</u>	<u>TOTAL</u>	<u>Internal Service</u> <u>(60)</u>
Contributions, Transfers, and Special and Extraordinary Items					
5200 Interfund Transfers – Out					
5300 Transfers Out to Component Units/Primary Governments					
5520 Special Items – Losses					
5530 Extraordinary Items – Losses					
9300 Interfund Transfers - IN					
9500 Capital Contributions					
9700 Transfers IN From Component Units/Primary Governments					
9920 Special Items – Gains					
9930 Extraordinary Items – Gains					
Change In Net Position	\$547,124			\$547,124	
0002 Net Position - Beginning of Fiscal Year	(3,561,351)			(3,561,351)	
0003 Accounting Changes / Residual Equity Transfers					
Net Position - End Of Year	(\$3,014,227)			(\$3,014,227)	

LEA : 124157802 Tredyffrin-Easttown SD

Printed 12/5/2022 9:01:34 AM

Amounts Expressed in Whole Dollars		<u>Food Service</u> <u>(51)</u>	<u>Child Care Operations</u> <u>(52)</u>	<u>Other Enterprise</u> <u>(58)</u>	<u>TOTAL</u>	<u>Internal Service(60)</u>
Cash Flows From Operating Activities						
0011	Cash Receipts From Users	753,312			753,312	
0012	Cash Receipts From Assessments Made to Other Funds					
0013	Cash Receipts From Earnings on Investments					
0014	Cash Receipts From Other Operating Revenue					
0015	Cash Payments To Employees For Services	2,943,449			2,943,449	
0016	Cash Payments For Insurance Claims					
0017	Cash Payments To Suppliers For Goods and Services	1,080,940			1,080,940	
0018	Cash Payments For Other Operating Expenses					
Net Cash Provided By (Used For) Operating Activities		(\$3,271,077)			(\$3,271,077)	
Cash Flows From Non-Capital Financing Activities						
0021	Receipts From Local Sources - 6000					
0022	Receipts From State Sources - 7000	258,885			258,885	
0023	Receipts From Federal Sources -8000	2,275,465			2,275,465	
0024	Notes and Loans Received (Repaid)					
0025	Interest Paid on Notes/Loans - 5100-830					
0026	Operating Transfers In (Out)/Residual Equity Trans					
0027	Operating Transfers In (Out) Primary Government / Comp Unit					
0028	Receipts From Refund of Prior Year Expenditures - 6991					
0029	Special and Extraordinary Gains (losses)					
0030	Receipts from Insurance Recoveries -9990					
Net Cash Prov By (Used for) Non-Capital Financing Activities		\$2,534,350			\$2,534,350	
Cash Flows From Capital and Related Financing Activities						
0031	Payments For Fac Acq, Const, and Imp - 4000					
0032	Gain / (Loss) on Sale of Fixed Assets - 6930					
0033	Proceeds From Extended Term Financing - 9200					
0034	Principal Paid on Financing Agreements					
0035	Interest Paid on Financing Agreements - 5100-830					
0036	(Inc) Dec in Contributed Capital					
Net Cash Prov By (Used for) Capital and Related Financing Activities						
Cash Flows From Investing Activities						
0041	Earnings on Investments - 6500	1,882			1,882	
0042	Purchase of Inv Securities / Deposits to Inv Pools					
0043	Receipts From Investment Pool Withdrawals					
0044	Proceeds from Sale and Maturity of Inv Securities					

LEA : 124157802 Tredyffrin-Easttown SD

Printed 12/5/2022 9:01:34 AM

0045 Loans Received (Paid)

Net Cash Prov By (Used for) Investing Activities	\$1,882	\$1,882
--	---------	---------

LEA : 124157802 Tredyffrin-Easttown SD

Printed 12/5/2022 9:01:34 AM

	<u>Food Service</u> <u>(51)</u>	<u>Child Care Operations</u> <u>(52)</u>	<u>Other Enterprise</u> <u>(58)</u>	<u>TOTAL</u>	<u>Internal Service</u> <u>(60)</u>
Net Increase (Decrease) in Cash Flows	(734,845)			(734,845)	
0004 Cash and Cash Equivalents Beginning of Year	906,993			906,993	
Cash and Cash Equivalents at Year End	\$172,148			\$172,148	
Reconciliation of Operating Income (Loss) To Net Cash Provided by (Used For) Operating Activities					
0005 Operating Income (Loss) per REP	(2,083,999)			(2,083,999)	
Adjustments					
0051 Depreciation and Net Amortization	25,800			25,800	
0052 Provision for Uncollectible Accounts					
0053 Other Adjustments	166,632			166,632	
Effect of Changes in Assets, Liabilities, Deferred Outflows and Deferred Inflows					
0054 (Inc) Dec In Accounts Receivable (0120-0150)	(5,603)			(5,603)	
0055 Advances to Other Funds (0160)	(1,358,483)			(1,358,483)	
0056 (Inc) Dec in Inventories (0170)	(9,673)			(9,673)	
0057 (Inc) Dec in Prepaid Expenses (0180)					
0058 (Inc) Dec in Other Current or Noncurrent Assets					
0064 Deferred Outflows (0910)	(84,017)			(84,017)	
0059 Inc (Dec) in Accounts Payable (0400-0450)	(2,525)			(2,525)	
0060 Inc (Dec) in Accrued Salaries/Benefits (0461)	20,589			20,589	
0065 Inc (Dec) in Net Pension Liabilities (0570)	(318,216)			(318,216)	
0066 Inc (Dec) in Other Postemp Benefit Oblig (0560)	56,946			56,946	
0061 Inc (Dec) in Payroll Deductions/Withholding (0462)					
0062 Inc (Dec) in Unearned Revenue (0480)	(50,850)			(50,850)	
0063 Inc (Dec) in Other Current or Noncurrent Liabilities					
0067 Deferred Inflows (0950)	372,322			372,322	
Total Adjustments	(\$1,187,078)			(\$1,187,078)	
Cash Provided By (Used for) Total	(\$3,271,077)			(\$3,271,077)	

COMBINED STATEMENT OF CASH FLOWS
SCHEDULE OF NONCASH INVESTING, CAPITAL, AND FINANCING ACTIVITIES

Explanation of Transaction and Balance Sheet Effect	Amount
Total	

LEA : 124157802 Tredyffrin-Easttown SD

Printed 12/5/2022 9:01:36 AM

Amounts Expressed in Whole Dollars		<u>Private Purpose Trust</u> <u>(71)</u>	<u>Investment Trust</u> <u>(72)</u>	<u>Pension Trust</u> <u>(73)</u>	<u>Student Activity Custodial</u> <u>(81)</u>
Assets And Deferred Outflows Of Resources					
Assets					
0100	Cash and Cash Equivalents	60,511			315,058
0110	Investments				
0130	Due From Other Funds				
0140	Due from Other Governments, Primary Government and Component Units				
0150	Other Receivables				
0170	Inventories				
0180	Prepaid Expenses (Expenditures)				
0190	Other Current Assets				
0220	Buildings and Building Improvements (Net)				
0230	Machinery, Equipment and Furniture (Net)				
Total Assets		\$60,511			\$315,058
0910	Deferred Outflows of Resources				
Total Assets And Deferred Outflows Of Resources		\$60,511			\$315,058

LEA : 124157802 Tredyffrin-Easttown SD

Printed 12/5/2022 9:01:36 AM

Amounts Expressed in Whole Dollars		<u>Other Custodial</u> <u>(89)</u>	<u>Fiduciary Component Units</u> <u>(98)</u>	<u>Total Fiduciary Funds</u>
Assets And Deferred Outflows Of Resources				
Assets				
0100	Cash and Cash Equivalents			375,569
0110	Investments			
0130	Due From Other Funds			
0140	Due from Other Governments, Primary Government and Component Units			
0150	Other Receivables			
0170	Inventories			
0180	Prepaid Expenses (Expenditures)			
0190	Other Current Assets			
0220	Buildings and Building Improvements (Net)			
0230	Machinery, Equipment and Furniture (Net)			
Total Assets				\$375,569
0910	Deferred Outflows of Resources			
Total Assets And Deferred Outflows Of Resources				\$375,569

LEA : 124157802 Tredyffrin-Easttown SD

Printed 12/5/2022 9:01:36 AM

Amounts Expressed in Whole Dollars	<u>Private Purpose Trust</u> <u>(71)</u>	<u>Investment Trust</u> <u>(72)</u>	<u>Pension Trust</u> <u>(73)</u>	<u>Student Activity Custodial</u> <u>(81)</u>
Liabilities, Deferred Inflows Of Resources And Net Position				
Liabilities				
0400 Due to Other Funds				
0410 Due to Other Governments, Primary Government and Component Units				
0420 Accounts Payable				
0430 Contracts Payable				
0450 Short-Term Payables				
0460 Payroll Accruals and Withholdings				
0480 Unearned Revenues				
0490 Other Current Liabilities				
Total Liabilities				
0950 Deferred Inflows of Resources				
Net Position				
0791 Net Investment in Capital Assets				
0009 Restricted Net Position (0792 – 0798)	60,511			315,058
0799 Unrestricted Net Position				
Total Net Position	\$60,511			\$315,058
Total Liabilities, Deferred Inflows Of Resources And Net Position	\$60,511			\$315,058

LEA : 124157802 Tredyffrin-Easttown SD

Printed 12/5/2022 9:01:36 AM

Amounts Expressed in Whole Dollars		<u>Other Custodial</u> <u>(89)</u>	<u>Fiduciary Component Units</u> <u>(98)</u>	<u>Total Fiduciary Funds</u>
Liabilities, Deferred Inflows Of Resources And Net Position				
Liabilities				
0400	Due to Other Funds			
0410	Due to Other Governments, Primary Government and Component Units			
0420	Accounts Payable			
0430	Contracts Payable			
0450	Short-Term Payables			
0460	Payroll Accruals and Withholdings			
0480	Unearned Revenues			
0490	Other Current Liabilities			
Total Liabilities				
0950	Deferred Inflows of Resources			
Net Position				
0791	Net Investment in Capital Assets			
0009	Restricted Net Position (0792 – 0798)			375,569
0799	Unrestricted Net Position			
Total Net Position				\$375,569
Total Liabilities, Deferred Inflows Of Resources And Net Position				\$375,569

LEA : 124157802 Tredyffrin-Easttown SD

Printed 12/5/2022 9:01:40 AM

Amounts Expressed in Whole Dollars	<u>Private Purpose Trust</u> <u>(71)</u>	<u>Investment Trust</u> <u>(72)</u>	<u>Pension Trust</u> <u>(73)</u>	<u>Student Activity</u> <u>Custodial</u> <u>(81)</u>	<u>Other Custodial</u> <u>(89)</u>	<u>Fiduciary Component</u> <u>Units</u> <u>(98)</u>
Additions						
0091 Gifts and Contributions	67,066			668,061		
0095 Net Investment Earnings						
0092 Other Additions						
Deductions						
0093 Scholarships Awarded	40,850					
0094 Other Deductions				652,810		
Change In Net Position	\$26,216			\$15,251		
0006 Net Position – Beginning of Fiscal Year	34,295			299,807		
0007 Net Position Held in Trust for Pension Benefits						
Net Position - End of Fiscal Year	\$60,511			\$315,058		

LEA : 124157802 Tredyffrin-Easttown SD

Printed 12/5/2022 9:01:40 AM

Amounts Expressed in Whole Dollars		<u>Total Fiduciary</u> <u>Funds</u>
Additions		
0091	Gifts and Contributions	735,127
0095	Net Investment Earnings	
0092	Other Additions	
Deductions		
0093	Scholarships Awarded	40,850
0094	Other Deductions	652,810
Change In Net Position		\$41,467
0006	Net Position – Beginning of Fiscal Year	334,102
0007	Net Position Held in Trust for Pension Benefits	
Net Position - End of Fiscal Year		\$375,569

	Revenue Reported In Current Year	Current Year Tax Accrual	Prior Year Tax Accrual	Taxes Collected In Current Year
Revenue from Local Sources				
6111 Current Real Estate Taxes	121,719,972.31			121,719,972.31
6112 Interim Real Estate Taxes	1,733,878.17			1,733,878.17
6113 Public Utility Realty Taxes	121,501.69			121,501.69
6153 Current Act 511 Real Estate Transfer Taxes	4,389,682.46			4,389,682.46
6411 Delinquent Real Estate Taxes	2,316,040.71			2,316,040.71
6500 Earnings on Investments	201,992.43			
6700 Revenues from LEA Activities	207,071.05			
6832 Federal IDEA Revenue Received as Pass Through	972,957.63			
6833 Federal ARRA IDEA Revenue Received as Pass Through	210,970.26			
6910 Rentals	647,686.75			
6991 Refunds of a Prior Year Expenditure	371,040.48			
6999 Other Revenues Not Specified Above	332,818.04			
TOTAL Revenue from Local Sources	\$133,225,611.98			\$130,281,075.34

	Revenue Reported In Current Year			
<u>Revenue from State Sources</u>				
7111 Basic Education Funding-Formula	4,037,287.54			
7112 Basic Education Funding-Social Security	2,389,090.15			
7271 Special Education funds for School-Aged Pupils	2,530,885.00			
7311 Pupil Transportation Subsidy	887,588.56			
7312 Nonpublic and Charter School Pupil Transportation Subsidy	140,910.00			
7320 Rental and Sinking Fund Payments / Building Reimbursement Subsidy	(0.02)			
7330 Health Services (Medical, Dental, Nurse, Act 25)	156,163.37			
7340 State Property Tax Reduction Allocation	2,099,919.78			
7361 School Safety and Security Grants	212,274.47			
7505 Ready to Learn Block Grant	199,614.00			
7820 State Share of Retirement Contributions	11,194,395.17			
TOTAL Revenue from State Sources	\$23,848,128.02			

	Revenue Reported In Current Year			
<u>Revenue from Federal Sources</u>				
8514 NCLB, Title I - Improving the Academic Achievement of the Disadvantaged	171,230.00			
8515 NCLB, Title II - Preparing, Training and Recruiting High Quality Teachers and Principals	73,248.60			
8516 NCLB, Title III - Language Instruction for Limited English Proficient and Immigrant Students	29,848.45			
8517 NCLB, Title IV - 21st Century Schools	12,250.87			
8743 ESSER II - Elementary and Secondary School Emergency Relief Fund	60,273.21			
8744 ARP ESSER - Elementary and Secondary School Emergency Relief Fund	259,872.28			
8751 ARP ESSER Learning Loss	3,811.00			
8754 ARP ESSER Homeless Children and Youth Funds	546.33			
8810 School-Based Access Medicaid Reimbursement Program (SBAP) Reimbursements (Access)	720,062.65			
8820 Medical Assistance Reimbursement for Administrative Claiming (Quarterly) Program	12,085.30			
TOTAL Revenue from Federal Sources	\$1,343,228.69			
TOTAL FROM ALL SOURCES	\$158,416,968.69			\$130,281,075.34

LEA : 124157802 Tredyffrin-Easttown SD

Printed 12/5/2022 9:01:48 AM

	<u>General Fund (10)</u>	<u>Student Sponsored Activity Fund (21)</u>	<u>Public Purpose Trust (27)</u>	<u>Other Compt Approved (28)</u>	<u>Athletic / Activity (29)</u>	<u>Capital Reserve (690, 1850) (31)</u>
6000 Revenue from Local Sources						
6111 Current Real Estate Taxes	121,719,972.31					
6112 Interim Real Estate Taxes	1,733,878.17					
6113 Public Utility Realty Taxes	121,501.69					
6153 Current Act 511 Real Estate Transfer Taxes	4,389,682.46					
6411 Delinquent Real Estate Taxes	2,316,040.71					
6500 Earnings on Investments	201,992.43					
6700 Revenues from LEA Activities	207,071.05					
6832 Federal IDEA Revenue Received as Pass Through	972,957.63					
6833 Federal ARRA IDEA Revenue Received as Pass Through	210,970.26					
6910 Rentals	647,686.75					
6991 Refunds of a Prior Year Expenditure	371,040.48					
6999 Other Revenues Not Specified Above	332,818.04					
6000 Total Revenue from Local Sources	\$133,225,611.98					
7000 Revenue from State Sources						
7111 Basic Education Funding-Formula	4,037,287.54					
7112 Basic Education Funding-Social Security	2,389,090.15					
7271 Special Education funds for School-Aged Pupils	2,530,885.00					
7311 Pupil Transportation Subsidy	887,588.56					
7312 Nonpublic and Charter School Pupil Transportation Subsidy	140,910.00					
7320 Rental and Sinking Fund Payments / Building Reimbursement Subsidy	(0.02)					
7330 Health Services (Medical, Dental, Nurse, Act 25)	156,163.37					
7340 State Property Tax Reduction Allocation	2,099,919.78					
7361 School Safety and Security Grants	212,274.47					
7505 Ready to Learn Block Grant	199,614.00					
7820 State Share of Retirement Contributions	11,194,395.17					
7000 Total Revenue from State Sources	\$23,848,128.02					
8000 Revenue from Federal Sources						
8514 NCLB, Title I - Improving the Academic Achievement of the Disadvantaged	171,230.00					
8515 NCLB, Title II - Preparing, Training and Recruiting High Quality Teachers and Principals	73,248.60					
8516 NCLB, Title III - Language Instruction for Limited English Proficient and Immigrant Students	29,848.45					
8517 NCLB, Title IV - 21st Century Schools	12,250.87					
8743 ESSER II - Elementary and Secondary School Emergency Relief Fund	60,273.21					
8744 ARP ESSER - Elementary and Secondary School Emergency Relief Fund	259,872.28					
8751 ARP ESSER Learning Loss	3,811.00					

LEA : 124157802 Tredyffrin-Easttown SD

Printed 12/5/2022 9:01:48 AM

	<u>Capital Reserve</u> <u>(1431) (32)</u>	<u>Other Capital</u> <u>Projects Fund (39)</u>	<u>Debt Service (40)</u>	<u>Permanent (90)</u>	<u>Total</u>
6000 Revenue from Local Sources					
6111 Current Real Estate Taxes					121,719,972.31
6112 Interim Real Estate Taxes					1,733,878.17
6113 Public Utility Realty Taxes					121,501.69
6153 Current Act 511 Real Estate Transfer Taxes					4,389,682.46
6411 Delinquent Real Estate Taxes					2,316,040.71
6500 Earnings on Investments	4,424.38	43,537.37			249,954.18
6700 Revenues from LEA Activities					207,071.05
6832 Federal IDEA Revenue Received as Pass Through					972,957.63
6833 Federal ARRA IDEA Revenue Received as Pass Through					210,970.26
6910 Rentals					647,686.75
6991 Refunds of a Prior Year Expenditure					371,040.48
6999 Other Revenues Not Specified Above					332,818.04
6000 Total Revenue from Local Sources	\$4,424.38	\$43,537.37			\$133,273,573.73
7000 Revenue from State Sources					
7111 Basic Education Funding-Formula					4,037,287.54
7112 Basic Education Funding-Social Security					2,389,090.15
7271 Special Education funds for School-Aged Pupils					2,530,885.00
7311 Pupil Transportation Subsidy					887,588.56
7312 Nonpublic and Charter School Pupil Transportation Subsidy					140,910.00
7320 Rental and Sinking Fund Payments / Building Reimbursement Subsidy					(0.02)
7330 Health Services (Medical, Dental, Nurse, Act 25)					156,163.37
7340 State Property Tax Reduction Allocation					2,099,919.78
7361 School Safety and Security Grants					212,274.47
7505 Ready to Learn Block Grant					199,614.00
7820 State Share of Retirement Contributions					11,194,395.17
7000 Total Revenue from State Sources					\$23,848,128.02
8000 Revenue from Federal Sources					
8514 NCLB, Title I - Improving the Academic Achievement of the Disadvantaged					171,230.00
8515 NCLB, Title II - Preparing, Training and Recruiting High Quality Teachers and Principals					73,248.60
8516 NCLB, Title III - Language Instruction for Limited English Proficient and Immigrant Students					29,848.45
8517 NCLB, Title IV - 21st Century Schools					12,250.87
8743 ESSER II - Elementary and Secondary School Emergency Relief Fund					60,273.21
8744 ARP ESSER - Elementary and Secondary School Emergency Relief Fund					259,872.28
8751 ARP ESSER Learning Loss					3,811.00

LEA : 124157802 Tredyffrin-Easttown SD

Printed 12/5/2022 9:01:48 AM

	<u>General Fund (10)</u>	<u>Student Sponsored Activity Fund (21)</u>	<u>Public Purpose Trust (27)</u>	<u>Other Compt Approved (28)</u>	<u>Athletic / Activity (29)</u>	<u>Capital Reserve (690, 1850) (31)</u>
8000 Revenue from Federal Sources						
8754 ARP ESSER Homeless Children and Youth Funds	546.33					
8810 School-Based Access Medicaid Reimbursement Program (SBAP) Reimbursements (Access)	720,062.65					
8820 Medical Assistance Reimbursement for Administrative Claiming (Quarterly) Program	12,085.30					
8000 Total Revenue from Federal Sources	\$1,343,228.69					
9000 Other Financing Sources						
9110 Face Value of Bonds Issued						
9130 Bond Premiums						
9220 Leases						
9310 General Fund Transfers						
9400 Sale of or Compensation for Loss of Fixed Assets						
9000 Total Other Financing Sources						
Total From All Sources	\$158,416,968.69					

LEA : 124157802 Tredyffrin-Easttown SD

Printed 12/5/2022 9:01:48 AM

	<u>Capital Reserve</u> <u>(1431) (32)</u>	<u>Other Capital</u> <u>Projects Fund (39)</u>	<u>Debt Service (40)</u>	<u>Permanent (90)</u>	<u>Total</u>
8000 Revenue from Federal Sources					
8754 ARP ESSER Homeless Children and Youth Funds					546.33
8810 School-Based Access Medicaid Reimbursement Program (SBAP) Reimbursements (Access)					720,062.65
8820 Medical Assistance Reimbursement for Administrative Claiming (Quarterly) Program					12,085.30
8000 Total Revenue from Federal Sources					\$1,343,228.69
9000 Other Financing Sources					
9110 Face Value of Bonds Issued		26,900,000.00			26,900,000.00
9130 Bond Premiums		4,374,716.05			4,374,716.05
9220 Leases		700,654.00			700,654.00
9310 General Fund Transfers	7,000,000.00				7,000,000.00
9400 Sale of or Compensation for Loss of Fixed Assets		91,000.00			91,000.00
9000 Total Other Financing Sources	\$7,000,000.00	\$32,066,370.05			\$39,066,370.05
Total From All Sources	\$7,004,424.38	\$32,109,907.42			\$197,531,300.49

LEA : 124157802 Tredyffrin-Easttown SD

Printed 12/5/2022 9:01:53 AM

	<u>General Fund (10)</u>	<u>Student Sponsored Activity Fund (21)</u>	<u>Public Purpose Trust (27)</u>	<u>Other Compt Approved (28)</u>	<u>Athletic / Activity (29)</u>	<u>Capital Reserve (690. 1850) (31)</u>
Revenue from Local Sources	133,225,611.98					
Revenue from State Sources	23,848,128.02					
Revenue from Federal Sources	1,343,228.69					
Other Financing Sources						
Total From All Sources	\$158,416,968.69					

LEA : 124157802 Tredyffrin-Easttown SD

Printed 12/5/2022 9:01:53 AM

	<u>Capital Reserve (1431)</u> <u>(32)</u>	<u>Other Capital Projects</u> <u>Fund (39)</u>	<u>Debt Service (40)</u>	<u>Permanent (90)</u>	<u>Total</u>
Revenue from Local Sources	4,424.38	43,537.37			133,273,573.73
Revenue from State Sources					23,848,128.02
Revenue from Federal Sources					1,343,228.69
Other Financing Sources	7,000,000.00	32,066,370.05			39,066,370.05
Total From All Sources	\$7,004,424.38	\$32,109,907.42			\$197,531,300.49

LEA : 124157802 Tredyffrin-Easttown SD

Printed 12/5/2022 9:01:57 AM

General Fund (10)

1000 Instruction		Total
100 <u>Personnel Services – Salaries</u>		
100 Personnel Services – Salaries		44,766,547.62
Total Personnel Services – Salaries		\$44,766,547.62
200 <u>Personnel Services – Employee Benefits</u>		
210 Group Insurance – Contracted Provider		7,303,817.82
220 Social Security Contributions		3,310,349.66
230 PSERS Retirement Contributions		15,726,823.72
250 Unemployment Compensation		14,810.74
260 Workers' Compensation		83,566.93
Total Personnel Services – Employee Benefits		\$26,439,368.87
300 <u>Purchased Professional and Technical Services</u>		
310 Official / Administrative Services		31,401.50
322 Professional Educational Services – Ius		7,478,690.70
329 Professional Educational Services – Other		10,699,264.99
340 Technical Services		60,273.21
Total Purchased Professional and Technical Services		\$18,269,630.40
400 <u>Purchased Property Services</u>		
430 Repairs and Maintenance Services		51,607.50
440 Rentals		4,443.17
Total Purchased Property Services		\$56,050.67
500 <u>Other Purchased Services</u>		
510 Student Transportation Services		49,949.95
530 Communications		15,377.00
550 Printing and Binding		25,724.44
561 Tuition To Other School Districts Within the State		116,039.96
562 Tuition To Pennsylvania Charter Schools		814,274.46
563 Tuition To Nonpublic Schools		163,642.00
564 Tuition To Career and Technology Centers		681,178.00
567 Tuition To Approved Private Schools (APS) and PA Chartered Schools for the Deaf and Blind		1,379,372.06
569 Tuition – Other		1,875,062.04
580 Travel		1,115.91
Total Other Purchased Services		\$5,121,735.82
600 <u>Supplies</u>		
610 General Supplies		1,101,545.81
640 Books and Periodicals		827,312.49
650 Supplies & Fees – Technology Related		506,377.17
Total Supplies		\$2,435,235.47
700 <u>Property</u>		
752 Capital Equipment – Original and Additional		29,105.90
756 Capitalized Technology Equipment – Original		8,758.55
762 Capitalized Equipment - Replacement		10,494.98
768 Capitalized Technology Software - Replacement		359,943.85
Total Property		\$408,303.28

LEA : 124157802 Tredyffrin-Easttown SD

Printed 12/5/2022 9:01:57 AM

General Fund (10)	
1000 Instruction	<u>Total</u>
800 <u>Other Objects</u>	
810 Dues and Fees	19,291.97
890 Miscellaneous Expenditures	23,573.00
Total Other Objects	\$42,864.97
Total 1000 Instruction	\$97,539,737.10

LEA : 124157802 Tredyffrin-Easttown SD

Printed 12/5/2022 9:01:57 AM

General Fund (10)

1100 Regular Programs – Elementary / Secondary

	Elementary	Secondary	Federal	Total
100 Personnel Services – Salaries				
100 Personnel Services – Salaries	19,162,386.98	18,688,649.82	255,252.57	38,106,289.37
Total Personnel Services – Salaries	\$19,162,386.98	\$18,688,649.82	\$255,252.57	\$38,106,289.37
200 Personnel Services – Employee Benefits				
210 Group Insurance – Contracted Provider	3,098,333.76	3,050,470.92	0.01	6,148,804.69
220 Social Security Contributions	1,428,467.91	1,386,784.38	703.06	2,815,955.35
230 PSERS Retirement Contributions	6,820,404.41	6,578,099.68	2,820.47	13,401,324.56
250 Unemployment Compensation	7,327.16	7,327.16		14,654.32
260 Workers' Compensation	39,262.14	39,262.13		78,524.27
Total Personnel Services – Employee Benefits	\$11,393,795.38	\$11,061,944.27	\$3,523.54	\$22,459,263.19
300 Purchased Professional and Technical Services				
329 Professional Educational Services – Other	1,578,418.19	2,189,977.89	943.00	3,769,339.08
340 Technical Services			60,273.21	60,273.21
Total Purchased Professional and Technical Services	\$1,578,418.19	\$2,189,977.89	\$61,216.21	\$3,829,612.29
400 Purchased Property Services				
430 Repairs and Maintenance Services	21,793.81	29,813.69		51,607.50
440 Rentals	2,189.25	2,253.92		4,443.17
Total Purchased Property Services	\$23,983.06	\$32,067.61		\$56,050.67
500 Other Purchased Services				
510 Student Transportation Services	19,499.39	30,450.56		49,949.95
530 Communications		15,377.00		15,377.00
550 Printing and Binding	3,861.25	21,863.19		25,724.44
562 Tuition To Pennsylvania Charter Schools	407,137.23	407,137.23		814,274.46
580 Travel	992.67	123.24		1,115.91
Total Other Purchased Services	\$431,490.54	\$474,951.22		\$906,441.76
600 Supplies				
610 General Supplies	448,050.13	559,115.95	12,738.27	1,019,904.35
640 Books and Periodicals	338,956.03	368,273.90	10,178.93	717,408.86
650 Supplies & Fees – Technology Related	139,361.79	199,435.84		338,797.63
Total Supplies	\$926,367.95	\$1,126,825.69	\$22,917.20	\$2,076,110.84
700 Property				
752 Capital Equipment – Original and Additional	3,427.50	25,678.40		29,105.90
756 Capitalized Technology Equipment– Original	32.78	8,725.77		8,758.55
762 Capitalized Equipment - Replacement	5,247.49	5,247.49		10,494.98
768 Capitalized Technology Software - Replacement	179,971.93	179,971.92		359,943.85
Total Property	\$188,679.70	\$219,623.58		\$408,303.28
800 Other Objects				
810 Dues and Fees	4,941.50	14,350.47		19,291.97
890 Miscellaneous Expenditures		23,573.00		23,573.00
Total Other Objects	\$4,941.50	\$37,923.47		\$42,864.97
Total 1100 Regular Programs – Elementary / Secondary	\$33,710,063.30	\$33,831,963.55	\$342,909.52	\$67,884,936.37

LEA : 124157802 Tredyffrin-Easttown SD

Printed 12/5/2022 9:01:57 AM

General Fund (10)

1110 Regular Programs

	Elementary	Secondary	Federal	Total
100 <u>Personnel Services – Salaries</u>				
100 Personnel Services – Salaries	19,162,386.98	18,688,649.82	8,355.00	37,859,391.80
Total Personnel Services – Salaries	\$19,162,386.98	\$18,688,649.82	\$8,355.00	\$37,859,391.80
200 <u>Personnel Services – Employee Benefits</u>				
210 Group Insurance – Contracted Provider	3,098,333.76	3,050,470.92		6,148,804.68
220 Social Security Contributions	1,428,467.91	1,386,784.38	703.06	2,815,955.35
230 PSERS Retirement Contributions	6,820,404.41	6,578,099.68	2,820.47	13,401,324.56
250 Unemployment Compensation	7,327.16	7,327.16		14,654.32
260 Workers' Compensation	39,262.14	39,262.13		78,524.27
Total Personnel Services – Employee Benefits	\$11,393,795.38	\$11,061,944.27	\$3,523.53	\$22,459,263.18
300 <u>Purchased Professional and Technical Services</u>				
329 Professional Educational Services – Other	1,578,418.19	2,189,977.89		3,768,396.08
340 Technical Services			60,273.21	60,273.21
Total Purchased Professional and Technical Services	\$1,578,418.19	\$2,189,977.89	\$60,273.21	\$3,828,669.29
400 <u>Purchased Property Services</u>				
430 Repairs and Maintenance Services	21,793.81	29,813.69		51,607.50
440 Rentals	2,189.25	2,253.92		4,443.17
Total Purchased Property Services	\$23,983.06	\$32,067.61		\$56,050.67
500 <u>Other Purchased Services</u>				
510 Student Transportation Services	19,499.39	30,450.56		49,949.95
530 Communications		15,377.00		15,377.00
550 Printing and Binding	3,861.25	21,863.19		25,724.44
562 Tuition To Pennsylvania Charter Schools	407,137.23	407,137.23		814,274.46
580 Travel	992.67	123.24		1,115.91
Total Other Purchased Services	\$431,490.54	\$474,951.22		\$906,441.76
600 <u>Supplies</u>				
610 General Supplies	448,050.13	559,115.95		1,007,166.08
640 Books and Periodicals	338,956.03	368,273.90		707,229.93
650 Supplies & Fees – Technology Related	139,361.79	199,435.84		338,797.63
Total Supplies	\$926,367.95	\$1,126,825.69		\$2,053,193.64
700 <u>Property</u>				
752 Capital Equipment – Original and Additional	3,427.50	25,678.40		29,105.90
756 Capitalized Technology Equipment – Original	32.78	8,725.77		8,758.55
762 Capitalized Equipment - Replacement	5,247.49	5,247.49		10,494.98
768 Capitalized Technology Software - Replacement	179,971.93	179,971.92		359,943.85
Total Property	\$188,679.70	\$219,623.58		\$408,303.28
800 <u>Other Objects</u>				
810 Dues and Fees	4,941.50	14,350.47		19,291.97
890 Miscellaneous Expenditures		23,573.00		23,573.00
Total Other Objects	\$4,941.50	\$37,923.47		\$42,864.97
Total 1110 Regular Programs	\$33,710,063.30	\$33,831,963.55	\$72,151.74	\$67,614,178.59

LEA : 124157802 Tredyffrin-Easttown SD

Printed 12/5/2022 9:01:57 AM

General Fund (10)

1190 Federally-Funded Regular Programs	<u>Elementary</u>	<u>Secondary</u>	<u>Federal</u>	<u>Total</u>
100 <u>Personnel Services – Salaries</u>				
100 Personnel Services – Salaries			246,897.57	246,897.57
Total Personnel Services – Salaries			\$246,897.57	\$246,897.57
200 <u>Personnel Services – Employee Benefits</u>				
210 Group Insurance – Contracted Provider			0.01	0.01
Total Personnel Services – Employee Benefits			\$0.01	\$0.01
300 <u>Purchased Professional and Technical Services</u>				
329 Professional Educational Services – Other			943.00	943.00
Total Purchased Professional and Technical Services			\$943.00	\$943.00
600 <u>Supplies</u>				
610 General Supplies			12,738.27	12,738.27
640 Books and Periodicals			10,178.93	10,178.93
Total Supplies			\$22,917.20	\$22,917.20
Total 1190 Federally-Funded Regular Programs			\$270,757.78	\$270,757.78

LEA : 124157802 Tredyffrin-Easttown SD

Printed 12/5/2022 9:01:57 AM

General Fund (10)

1200 Special Programs – Elementary / Secondary	Elementary	Secondary	Federal	Total
100 Personnel Services – Salaries				
100 Personnel Services – Salaries	3,556,070.82	2,765,040.95	256,731.88	6,577,843.65
Total Personnel Services – Salaries	\$3,556,070.82	\$2,765,040.95	\$256,731.88	\$6,577,843.65
200 Personnel Services – Employee Benefits				
210 Group Insurance – Contracted Provider	662,119.20	483,647.46		1,145,766.66
220 Social Security Contributions	263,452.12	205,082.54	19,639.98	488,174.64
230 PSERS Retirement Contributions	1,241,072.62	965,928.75	89,702.11	2,296,703.48
250 Unemployment Compensation	71.10	71.10		142.20
260 Workers' Compensation	2,521.33	2,521.33		5,042.66
Total Personnel Services – Employee Benefits	\$2,169,236.37	\$1,657,251.18	\$109,342.09	\$3,935,829.64
300 Purchased Professional and Technical Services				
310 Official / Administrative Services	15,700.75	15,700.75		31,401.50
322 Professional Educational Services – Ius	3,171,110.22	3,146,472.90	1,161,107.58	7,478,690.70
329 Professional Educational Services – Other	3,242,401.97	3,242,401.96	444,371.98	6,929,175.91
Total Purchased Professional and Technical Services	\$6,429,212.94	\$6,404,575.61	\$1,605,479.56	\$14,439,268.11
500 Other Purchased Services				
561 Tuition To Other School Districts Within the State	58,019.98	58,019.98		116,039.96
563 Tuition To Nonpublic Schools	81,821.00	81,821.00		163,642.00
567 Tuition To Approved Private Schools (APS) and PA Chartered Schools for the Deaf and Blind	681,334.03	681,334.03	16,704.00	1,379,372.06
569 Tuition – Other	937,531.02	937,531.02		1,875,062.04
Total Other Purchased Services	\$1,758,706.03	\$1,758,706.03	\$16,704.00	\$3,534,116.06
600 Supplies				
610 General Supplies	40,262.91	35,076.58		75,339.49
640 Books and Periodicals	55,396.18	52,360.01		107,756.19
650 Supplies & Fees – Technology Related	83,789.77	83,789.77		167,579.54
Total Supplies	\$179,448.86	\$171,226.36		\$350,675.22
Total 1200 Special Programs – Elementary / Secondary	\$14,092,675.02	\$12,756,800.13	\$1,988,257.53	\$28,837,732.68

LEA : 124157802 Tredyffrin-Easttown SD

Printed 12/5/2022 9:01:57 AM

General Fund (10)

1210 Life Skills Support

	<u>Elementary</u>	<u>Secondary</u>	<u>Federal</u>	<u>Total</u>
100 <u>Personnel Services – Salaries</u>				
100 Personnel Services – Salaries	38,357.95	38,357.95		76,715.90
Total Personnel Services – Salaries	\$38,357.95	\$38,357.95		\$76,715.90
200 <u>Personnel Services – Employee Benefits</u>				
210 Group Insurance – Contracted Provider	18,456.49	18,456.49		36,912.98
220 Social Security Contributions	2,854.21	2,854.20		5,708.41
230 PSERS Retirement Contributions	13,413.01	13,413.01		26,826.02
250 Unemployment Compensation	71.10	71.10		142.20
260 Workers' Compensation	2,521.33	2,521.33		5,042.66
Total Personnel Services – Employee Benefits	\$37,316.14	\$37,316.13		\$74,632.27
300 <u>Purchased Professional and Technical Services</u>				
329 Professional Educational Services – Other	3,223,620.84	3,223,620.84	444,371.98	6,891,613.66
Total Purchased Professional and Technical Services	\$3,223,620.84	\$3,223,620.84	\$444,371.98	\$6,891,613.66
500 <u>Other Purchased Services</u>				
561 Tuition To Other School Districts Within the State	58,019.98	58,019.98		116,039.96
563 Tuition To Nonpublic Schools	81,821.00	81,821.00		163,642.00
567 Tuition To Approved Private Schools (APS) and PA Chartered Schools for the Deaf and Blind	477,809.73	477,809.72	16,704.00	972,323.45
569 Tuition – Other	937,531.02	937,531.02		1,875,062.04
Total Other Purchased Services	\$1,555,181.73	\$1,555,181.72	\$16,704.00	\$3,127,067.45
Total 1210 Life Skills Support	\$4,854,476.66	\$4,854,476.64	\$461,075.98	\$10,170,029.28

LEA : 124157802 Tredyffrin-Easttown SD

Printed 12/5/2022 9:01:57 AM

General Fund (10)

1220 Sensory Support	Elementary	Secondary	Federal	Total
100 Personnel Services – Salaries				
100 Personnel Services – Salaries	215,831.54	43,788.22		259,619.76
Total Personnel Services – Salaries	\$215,831.54	\$43,788.22		\$259,619.76
200 Personnel Services – Employee Benefits				
210 Group Insurance – Contracted Provider	44,489.44	938.38		45,427.82
220 Social Security Contributions	15,772.10	3,353.25		19,125.35
230 PSERS Retirement Contributions	74,637.76	15,299.66		89,937.42
Total Personnel Services – Employee Benefits	\$134,899.30	\$19,591.29		\$154,490.59
600 Supplies				
610 General Supplies	1,042.02			1,042.02
Total Supplies	\$1,042.02			\$1,042.02
Total 1220 Sensory Support	\$351,772.86	\$63,379.51		\$415,152.37

LEA : 124157802 Tredyffrin-Easttown SD

Printed 12/5/2022 9:01:57 AM

General Fund (10)

1240 Academic Support

	<u>Elementary</u>	<u>Secondary</u>	<u>Federal</u>	<u>Total</u>
100 <u>Personnel Services – Salaries</u>				
100 Personnel Services – Salaries	3,301,881.33	2,682,894.78	256,731.88	6,241,507.99
Total Personnel Services – Salaries	\$3,301,881.33	\$2,682,894.78	\$256,731.88	\$6,241,507.99
200 <u>Personnel Services – Employee Benefits</u>				
210 Group Insurance – Contracted Provider	599,173.27	464,252.59		1,063,425.86
220 Social Security Contributions	244,825.81	198,875.09	19,639.98	463,340.88
230 PSERS Retirement Contributions	1,153,021.85	937,216.08	89,702.11	2,179,940.04
Total Personnel Services – Employee Benefits	\$1,997,020.93	\$1,600,343.76	\$109,342.09	\$3,706,706.78
300 <u>Purchased Professional and Technical Services</u>				
310 Official / Administrative Services	15,700.75	15,700.75		31,401.50
329 Professional Educational Services – Other	18,781.13	18,781.12		37,562.25
Total Purchased Professional and Technical Services	\$34,481.88	\$34,481.87		\$68,963.75
600 <u>Supplies</u>				
610 General Supplies	39,220.89	35,076.58		74,297.47
640 Books and Periodicals	55,396.18	52,360.01		107,756.19
650 Supplies & Fees – Technology Related	83,789.77	83,789.77		167,579.54
Total Supplies	\$178,406.84	\$171,226.36		\$349,633.20
Total 1240 Academic Support	\$5,511,790.98	\$4,488,946.77	\$366,073.97	\$10,366,811.72

LEA : 124157802 Tredyffrin-Easttown SD

Printed 12/5/2022 9:01:57 AM

General Fund (10)

1241 Learning Support – Public	Elementary	Secondary	Federal	Total
100 Personnel Services – Salaries				
100 Personnel Services – Salaries	2,405,533.82	2,226,823.77	256,731.88	4,889,089.47
Total Personnel Services – Salaries	\$2,405,533.82	\$2,226,823.77	\$256,731.88	\$4,889,089.47
200 Personnel Services – Employee Benefits				
210 Group Insurance – Contracted Provider	450,574.78	396,114.34		846,689.12
220 Social Security Contributions	177,913.63	164,769.70	19,639.98	362,323.31
230 PSERS Retirement Contributions	842,142.92	780,180.24	89,702.11	1,712,025.27
Total Personnel Services – Employee Benefits	\$1,470,631.33	\$1,341,064.28	\$109,342.09	\$2,921,037.70
300 Purchased Professional and Technical Services				
310 Official / Administrative Services	15,700.75	15,700.75		31,401.50
329 Professional Educational Services – Other	18,781.13	18,781.12		37,562.25
Total Purchased Professional and Technical Services	\$34,481.88	\$34,481.87		\$68,963.75
600 Supplies				
610 General Supplies	31,495.14	27,350.83		58,845.97
640 Books and Periodicals	55,244.28	52,208.11		107,452.39
650 Supplies & Fees – Technology Related	83,764.77	83,764.77		167,529.54
Total Supplies	\$170,504.19	\$163,323.71		\$333,827.90
Total 1241 Learning Support – Public	\$4,081,151.22	\$3,765,693.63	\$366,073.97	\$8,212,918.82

LEA : 124157802 Tredyffrin-Easttown SD

Printed 12/5/2022 9:01:57 AM

General Fund (10)

1243 Gifted Support

	<u>Elementary</u>	<u>Secondary</u>	<u>Federal</u>	<u>Total</u>
100 <u>Personnel Services – Salaries</u>				
100 Personnel Services – Salaries	896,347.51	456,071.01		1,352,418.52
Total Personnel Services – Salaries	\$896,347.51	\$456,071.01		\$1,352,418.52
200 <u>Personnel Services – Employee Benefits</u>				
210 Group Insurance – Contracted Provider	148,598.49	68,138.25		216,736.74
220 Social Security Contributions	66,912.18	34,105.39		101,017.57
230 PSERS Retirement Contributions	310,878.93	157,035.84		467,914.77
Total Personnel Services – Employee Benefits	\$526,389.60	\$259,279.48		\$785,669.08
600 <u>Supplies</u>				
610 General Supplies	7,725.75	7,725.75		15,451.50
640 Books and Periodicals	151.90	151.90		303.80
650 Supplies & Fees – Technology Related	25.00	25.00		50.00
Total Supplies	\$7,902.65	\$7,902.65		\$15,805.30
Total 1243 Gifted Support	\$1,430,639.76	\$723,253.14		\$2,153,892.90

LEA : 124157802 Tredyffrin-Easttown SD

Printed 12/5/2022 9:01:57 AM

General Fund (10)

1280 Early Intervention Support

300 Purchased Professional and Technical Services

322 Professional Educational Services – lus	Elementary	Secondary	Federal	Total
	24,637.31			24,637.31
Total Purchased Professional and Technical Services	\$24,637.31			\$24,637.31
Total 1280 Early Intervention Support	\$24,637.31			\$24,637.31

LEA : 124157802 Tredyffrin-Easttown SD

Printed 12/5/2022 9:01:57 AM

General Fund (10)

1290 Special Programs - Other Support	<u>Elementary</u>	<u>Secondary</u>	<u>Federal</u>	<u>Total</u>
300 <u>Purchased Professional and Technical Services</u>				
322 Professional Educational Services – lus	3,146,472.91	3,146,472.90	1,161,107.58	7,454,053.39
Total Purchased Professional and Technical Services	\$3,146,472.91	\$3,146,472.90	\$1,161,107.58	\$7,454,053.39
500 <u>Other Purchased Services</u>				
567 Tuition To Approved Private Schools (APS) and PA Chartered Schools for the Deaf and Blind	203,524.30	203,524.31		407,048.61
Total Other Purchased Services	\$203,524.30	\$203,524.31		\$407,048.61
Total 1290 Special Programs - Other Support	\$3,349,997.21	\$3,349,997.21	\$1,161,107.58	\$7,861,102.00

LEA : 124157802 Tredyffrin-Easttown SD

Printed 12/5/2022 9:01:57 AM

General Fund (10)

1300 Vocational Education

	<u>Elementary</u>	<u>Secondary</u>	<u>Federal</u>	<u>Total</u>
500 <u>Other Purchased Services</u>				
564 Tuition To Career and Technology Centers		681,178.00		681,178.00
Total Other Purchased Services		\$681,178.00		\$681,178.00
Total 1300 Vocational Education		\$681,178.00		\$681,178.00

LEA : 124157802 Tredyffrin-Easttown SD

Printed 12/5/2022 9:01:57 AM

General Fund (10)

1400 Other Instructional Programs – Elementary / Secondary	<u>Elementary</u>	<u>Secondary</u>	<u>Federal</u>	<u>Total</u>
100 <u>Personnel Services – Salaries</u>				
100 Personnel Services – Salaries	1,856.25	59,858.35	20,700.00	82,414.60
Total Personnel Services – Salaries	\$1,856.25	\$59,858.35	\$20,700.00	\$82,414.60
200 <u>Personnel Services – Employee Benefits</u>				
210 Group Insurance – Contracted Provider		9,246.47		9,246.47
220 Social Security Contributions	140.75	4,489.10	1,589.82	6,219.67
230 PSERS Retirement Contributions	648.58	20,914.54	7,232.56	28,795.68
250 Unemployment Compensation		14.22		14.22
Total Personnel Services – Employee Benefits	\$789.33	\$34,664.33	\$8,822.38	\$44,276.04
600 <u>Supplies</u>				
610 General Supplies			3,479.97	3,479.97
640 Books and Periodicals	764.00	763.99	619.45	2,147.44
Total Supplies	\$764.00	\$763.99	\$4,099.42	\$5,627.41
Total 1400 Other Instructional Programs – Elementary / Secondary	\$3,409.58	\$95,286.67	\$33,621.80	\$132,318.05

LEA : 124157802 Tredyffrin-Easttown SD

Printed 12/5/2022 9:01:57 AM

General Fund (10)

1410 Drivers' Education

	<u>Elementary</u>	<u>Secondary</u>	<u>Federal</u>	<u>Total</u>
100 <u>Personnel Services – Salaries</u>				
100 Personnel Services – Salaries		58,002.10		58,002.10
Total Personnel Services – Salaries		\$58,002.10		\$58,002.10
200 <u>Personnel Services – Employee Benefits</u>				
210 Group Insurance – Contracted Provider		9,246.47		9,246.47
220 Social Security Contributions		4,348.35		4,348.35
230 PSERS Retirement Contributions		20,265.96		20,265.96
250 Unemployment Compensation		14.22		14.22
Total Personnel Services – Employee Benefits		\$33,875.00		\$33,875.00
Total 1410 Drivers' Education		\$91,877.10		\$91,877.10

LEA : 124157802 Tredyffrin-Easttown SD

Printed 12/5/2022 9:01:57 AM

General Fund (10)

1420 Summer School	<u>Elementary</u>	<u>Secondary</u>	<u>Federal</u>	<u>Total</u>
100 <u>Personnel Services – Salaries</u>				
100 Personnel Services – Salaries			20,700.00	20,700.00
Total Personnel Services – Salaries			\$20,700.00	\$20,700.00
200 <u>Personnel Services – Employee Benefits</u>				
220 Social Security Contributions			1,589.82	1,589.82
230 PSERS Retirement Contributions			7,232.56	7,232.56
Total Personnel Services – Employee Benefits			\$8,822.38	\$8,822.38
600 <u>Supplies</u>				
610 General Supplies			3,479.97	3,479.97
640 Books and Periodicals	764.00	763.99	619.45	2,147.44
Total Supplies	\$764.00	\$763.99	\$4,099.42	\$5,627.41
Total 1420 Summer School	\$764.00	\$763.99	\$33,621.80	\$35,149.79

LEA : 124157802 Tredyffrin-Easttown SD

Printed 12/5/2022 9:01:57 AM

General Fund (10)

1430 Homebound Instruction	<u>Elementary</u>	<u>Secondary</u>	<u>Federal</u>	<u>Total</u>
100 <u>Personnel Services – Salaries</u>				
100 Personnel Services – Salaries	1,856.25	1,856.25		3,712.50
Total Personnel Services – Salaries	\$1,856.25	\$1,856.25		\$3,712.50
200 <u>Personnel Services – Employee Benefits</u>				
220 Social Security Contributions	140.75	140.75		281.50
230 PSERS Retirement Contributions	648.58	648.58		1,297.16
Total Personnel Services – Employee Benefits	\$789.33	\$789.33		\$1,578.66
Total 1430 Homebound Instruction	\$2,645.58	\$2,645.58		\$5,291.16

LEA : 124157802 Tredyffrin-Easttown SD

Printed 12/5/2022 9:01:57 AM

General Fund (10)

1500 Nonpublic School Programs	<u>Elementary</u>	<u>Secondary</u>	<u>Federal</u>	<u>Total</u>
300 <u>Purchased Professional and Technical Services</u>				
329 Professional Educational Services – Other			750.00	750.00
Total Purchased Professional and Technical Services			\$750.00	\$750.00
600 <u>Supplies</u>				
610 General Supplies			2,822.00	2,822.00
Total Supplies			\$2,822.00	\$2,822.00
Total 1500 Nonpublic School Programs			\$3,572.00	\$3,572.00

LEA : 124157802 Tredyffrin-Easttown SD

Printed 12/5/2022 9:02:03 AM

General Fund (10)

2000 Support Services

Total

100	<u>Personnel Services – Salaries</u>	
100	Personnel Services – Salaries	19,539,091.14
Total Personnel Services – Salaries		\$19,539,091.14
200	<u>Personnel Services – Employee Benefits</u>	
210	Group Insurance – Contracted Provider	3,234,020.73
220	Social Security Contributions	1,392,023.72
230	PSERS Retirement Contributions	6,467,330.27
240	Tuition Reimbursement	264,841.66
250	Unemployment Compensation	810.57
260	Workers' Compensation	37,720.51
299	All Other Employee Benefits	20,874.58
Total Personnel Services – Employee Benefits		\$11,417,622.04
300	<u>Purchased Professional and Technical Services</u>	
310	Official / Administrative Services	8,000.00
322	Professional Educational Services – Ius	7,173.45
329	Professional Educational Services – Other	605,197.10
330	Other Professional Services	580,003.60
340	Technical Services	436,139.22
350	Security / Safety Services	16,108.00
390	Other Purchased Professional and Technical Services	94,697.13
Total Purchased Professional and Technical Services		\$1,747,318.50
400	<u>Purchased Property Services</u>	
410	Cleaning Services	106,385.79
420	Utility Services	1,016,426.56
430	Repairs and Maintenance Services	1,542,171.65
440	Rentals	200,444.90
Total Purchased Property Services		\$2,865,428.90
500	<u>Other Purchased Services</u>	
513	Contracted Carriers	5,349,595.26
516	Student Transportation Services From the IU	19,024.39
520	Insurance – General	383,179.96
522	Automotive Liability Insurance	30,493.00
523	General Property and Liability Insurance	126,448.82
530	Communications	215,777.82
541	Advertising Related to Federal Grant Awards	10,244.95
549	Other Advertising/Public Relations	15,092.79
550	Printing and Binding	19,401.72
580	Travel	23,966.61
595	IU Payments By Withholding	73,576.36
Total Other Purchased Services		\$6,266,801.68
600	<u>Supplies</u>	
610	General Supplies	1,060,511.30
620	Energy	796,613.84
630	Food	1,845.10

LEA : 124157802 Tredyffrin-Easttown SD

Printed 12/5/2022 9:02:03 AM

General Fund (10)

2000 Support Services

Total

600 <u>Supplies</u>	
640 Books and Periodicals	290,749.99
650 Supplies & Fees – Technology Related	309,608.51
Total Supplies	\$2,459,328.74
700 <u>Property</u>	
752 Capital Equipment – Original and Additional	89,055.12
756 Capitalized Technology Equipment – Original	23,116.00
758 Capitalized Technology Software - Original	24,230.00
762 Capitalized Equipment - Replacement	8,756.00
Total Property	\$145,157.12
800 <u>Other Objects</u>	
810 Dues and Fees	97,219.65
Total Other Objects	\$97,219.65
Total 2000 Support Services	\$44,537,967.77

LEA : 124157802 Tredyffrin-Easttown SD

Printed 12/5/2022 9:02:03 AM

General Fund (10)				
2100 Support Services – Students	<u>Elementary</u>	<u>Secondary</u>	<u>Federal</u>	<u>Total</u>
100 <u>Personnel Services – Salaries</u>				
100 Personnel Services – Salaries	1,524,287.91	2,218,201.08	600.00	3,780,943.01
Total Personnel Services – Salaries	\$1,524,287.91	\$2,218,201.08	\$600.00	\$3,780,943.01
200 <u>Personnel Services – Employee Benefits</u>				
210 Group Insurance – Contracted Provider	207,053.49	346,701.97		563,120.25
220 Social Security Contributions	111,744.13	162,142.19		276,738.70
230 PSERS Retirement Contributions	519,702.45	762,564.58		1,295,499.43
250 Unemployment Compensation	71.10	71.10		142.20
260 Workers' Compensation	3,026.45	3,026.45		6,052.90
Total Personnel Services – Employee Benefits	\$841,597.62	\$1,274,506.29		\$2,141,553.48
300 <u>Purchased Professional and Technical Services</u>				
340 Technical Services	5,362.12	5,362.12		10,724.24
Total Purchased Professional and Technical Services	\$5,362.12	\$5,362.12		\$10,724.24
400 <u>Purchased Property Services</u>				
430 Repairs and Maintenance Services		2,160.00		2,160.00
Total Purchased Property Services		\$2,160.00		\$2,160.00
500 <u>Other Purchased Services</u>				
530 Communications		520.23		520.23
550 Printing and Binding	1,942.57	1,942.57		3,885.14
580 Travel	1,226.97	1,226.96		2,453.93
Total Other Purchased Services	\$3,169.54	\$3,689.76		\$6,859.30
600 <u>Supplies</u>				
610 General Supplies	16,109.41	29,187.07		45,296.48
640 Books and Periodicals	783.16	9,617.68		10,400.84
Total Supplies	\$16,892.57	\$38,804.75		\$55,697.32
800 <u>Other Objects</u>				
810 Dues and Fees		900.00		900.00
Total Other Objects		\$900.00		\$900.00
Total 2100 Support Services – Students	\$2,391,309.76	\$3,543,624.00	\$600.00	\$5,998,837.35

LEA : 124157802 Tredyffrin-Easttown SD

Printed 12/5/2022 9:02:03 AM

General Fund (10)

2110 Supervision of Student Services	Elementary	Secondary	Federal	Total
100 <u>Personnel Services – Salaries</u>				
100 Personnel Services – Salaries	394,220.27	440,054.78		834,275.05
Total Personnel Services – Salaries	\$394,220.27	\$440,054.78		\$834,275.05
200 <u>Personnel Services – Employee Benefits</u>				
210 Group Insurance – Contracted Provider	28,744.91	38,109.70		66,854.61
220 Social Security Contributions	27,381.77	30,844.80		58,226.57
230 PSERS Retirement Contributions	124,992.30	141,073.30		266,065.60
250 Unemployment Compensation	71.10	71.10		142.20
260 Workers' Compensation	3,026.45	3,026.45		6,052.90
Total Personnel Services – Employee Benefits	\$184,216.53	\$213,125.35		\$397,341.88
300 <u>Purchased Professional and Technical Services</u>				
340 Technical Services	5,362.12	5,362.12		10,724.24
Total Purchased Professional and Technical Services	\$5,362.12	\$5,362.12		\$10,724.24
500 <u>Other Purchased Services</u>				
550 Printing and Binding	1,942.57	1,942.57		3,885.14
580 Travel	1,226.97	1,226.96		2,453.93
Total Other Purchased Services	\$3,169.54	\$3,169.53		\$6,339.07
600 <u>Supplies</u>				
610 General Supplies	6,801.89	6,801.89		13,603.78
640 Books and Periodicals	245.71	245.71		491.42
Total Supplies	\$7,047.60	\$7,047.60		\$14,095.20
Total 2110 Supervision of Student Services	\$594,016.06	\$668,759.38		\$1,262,775.44

LEA : 124157802 Tredyffrin-Easttown SD

Printed 12/5/2022 9:02:03 AM

General Fund (10)

2111 Supervision of Student Services – Head of Component	Elementary	Secondary	Federal	Total
100 Personnel Services – Salaries				
100 Personnel Services – Salaries	394,220.27	440,054.78		834,275.05
Total Personnel Services – Salaries	\$394,220.27	\$440,054.78		\$834,275.05
200 Personnel Services – Employee Benefits				
210 Group Insurance – Contracted Provider	28,744.91	38,109.70		66,854.61
220 Social Security Contributions	27,381.77	30,844.80		58,226.57
230 PSERS Retirement Contributions	124,992.30	141,073.30		266,065.60
250 Unemployment Compensation	71.10	71.10		142.20
260 Workers' Compensation	3,026.45	3,026.45		6,052.90
Total Personnel Services – Employee Benefits	\$184,216.53	\$213,125.35		\$397,341.88
300 Purchased Professional and Technical Services				
340 Technical Services	5,362.12	5,362.12		10,724.24
Total Purchased Professional and Technical Services	\$5,362.12	\$5,362.12		\$10,724.24
500 Other Purchased Services				
550 Printing and Binding	1,942.57	1,942.57		3,885.14
580 Travel	1,226.97	1,226.96		2,453.93
Total Other Purchased Services	\$3,169.54	\$3,169.53		\$6,339.07
600 Supplies				
610 General Supplies	6,801.89	6,801.89		13,603.78
640 Books and Periodicals	245.71	245.71		491.42
Total Supplies	\$7,047.60	\$7,047.60		\$14,095.20
Total 2111 Supervision of Student Services – Head of Component	\$594,016.06	\$668,759.38		\$1,262,775.44

LEA : 124157802 Tredyffrin-Easttown SD

Printed 12/5/2022 9:02:03 AM

General Fund (10)

2120 Guidance Services	Elementary	Secondary	Federal	Total
100 Personnel Services – Salaries				
100 Personnel Services – Salaries	1,130,067.64	1,778,146.30	600.00	2,908,813.94
Total Personnel Services – Salaries	\$1,130,067.64	\$1,778,146.30	\$600.00	\$2,908,813.94
200 Personnel Services – Employee Benefits				
210 Group Insurance – Contracted Provider	178,308.58	308,592.27		486,900.85
220 Social Security Contributions	84,362.36	131,297.39		215,659.75
230 PSERS Retirement Contributions	394,710.15	621,491.28		1,016,201.43
Total Personnel Services – Employee Benefits	\$657,381.09	\$1,061,380.94		\$1,718,762.03
400 Purchased Property Services				
430 Repairs and Maintenance Services		2,160.00		2,160.00
Total Purchased Property Services		\$2,160.00		\$2,160.00
500 Other Purchased Services				
530 Communications		520.23		520.23
Total Other Purchased Services		\$520.23		\$520.23
600 Supplies				
610 General Supplies	938.21	14,015.88		14,954.09
640 Books and Periodicals	537.45	9,371.97		9,909.42
Total Supplies	\$1,475.66	\$23,387.85		\$24,863.51
800 Other Objects				
810 Dues and Fees		900.00		900.00
Total Other Objects		\$900.00		\$900.00
Total 2120 Guidance Services	\$1,788,924.39	\$2,866,495.32	\$600.00	\$4,656,019.71

LEA : 124157802 Tredyffrin-Easttown SD

Printed 12/5/2022 9:02:03 AM

General Fund (10)

2150 Speech Pathology and Audiology Services

	<u>Elementary</u>	<u>Secondary</u>	<u>Federal</u>	<u>Total</u>
600 <u>Supplies</u>				
610 General Supplies	8,369.31	8,369.30		16,738.61
Total Supplies	\$8,369.31	\$8,369.30		\$16,738.61
Total 2150 Speech Pathology and Audiology Services	\$8,369.31	\$8,369.30		\$16,738.61

LEA : 124157802 Tredyffrin-Easttown SD

Printed 12/5/2022 9:02:03 AM

General Fund (10)

2170 Student Accounting Services

Elementary Secondary Federal Total

100 Personnel Services – Salaries

100 Personnel Services – Salaries 37,854.02

Total Personnel Services – Salaries \$37,854.02

200 Personnel Services – Employee Benefits

210 Group Insurance – Contracted Provider 9,364.79

220 Social Security Contributions 2,852.38

230 PSERS Retirement Contributions 13,232.40

Total Personnel Services – Employee Benefits \$25,449.57

Total 2170 Student Accounting Services \$63,303.59

LEA : 124157802 Tredyffrin-Easttown SD

Printed 12/5/2022 9:02:03 AM

General Fund (10)

2200 Support Services – Instructional Staff

	Elementary	Secondary	Federal	Total
100 <u>Personnel Services – Salaries</u>				
100 Personnel Services – Salaries	1,275,902.07	1,074,099.49	7,280.00	2,357,281.56
Total Personnel Services – Salaries	\$1,275,902.07	\$1,074,099.49	\$7,280.00	\$2,357,281.56
200 <u>Personnel Services – Employee Benefits</u>				
210 Group Insurance – Contracted Provider	159,180.76	114,541.93		273,722.69
220 Social Security Contributions	89,069.88	74,125.35		163,195.23
230 PSERS Retirement Contributions	431,080.23	356,406.66		787,486.89
240 Tuition Reimbursement	132,420.83	132,420.83		264,841.66
250 Unemployment Compensation	56.88	56.88		113.76
260 Workers' Compensation	2,747.66	2,747.65		5,495.31
Total Personnel Services – Employee Benefits	\$814,556.24	\$680,299.30		\$1,494,855.54
300 <u>Purchased Professional and Technical Services</u>				
310 Official / Administrative Services	4,000.00	4,000.00		8,000.00
322 Professional Educational Services – Ius			7,173.45	7,173.45
329 Professional Educational Services – Other	2,668.89	2,668.88	9,432.00	14,769.77
340 Technical Services	750.00	750.00		1,500.00
Total Purchased Professional and Technical Services	\$7,418.89	\$7,418.88	\$16,605.45	\$31,443.22
400 <u>Purchased Property Services</u>				
430 Repairs and Maintenance Services	1,804.69			1,804.69
Total Purchased Property Services	\$1,804.69			\$1,804.69
500 <u>Other Purchased Services</u>				
550 Printing and Binding	3,572.22	3,572.24		7,144.46
580 Travel	1,415.11	1,414.10		2,829.21
Total Other Purchased Services	\$4,987.33	\$4,986.34		\$9,973.67
600 <u>Supplies</u>				
610 General Supplies	12,601.64	27,885.05		40,486.69
640 Books and Periodicals	46,413.74	97,827.52		144,241.26
650 Supplies & Fees – Technology Related	8,073.79	10,423.77		18,497.56
Total Supplies	\$67,089.17	\$136,136.34		\$203,225.51
800 <u>Other Objects</u>				
810 Dues and Fees	9,944.50	9,998.85		19,943.35
Total Other Objects	\$9,944.50	\$9,998.85		\$19,943.35
Total 2200 Support Services – Instructional Staff	\$2,181,702.89	\$1,912,939.20	\$23,885.45	\$4,118,527.54

LEA : 124157802 Tredyffrin-Easttown SD

Printed 12/5/2022 9:02:03 AM

General Fund (10)

2220 Technology Support Services

	<u>Elementary</u>	<u>Secondary</u>	<u>Federal</u>	<u>Total</u>
600 <u>Supplies</u>				
610 General Supplies	1,698.99			1,698.99
650 Supplies & Fees – Technology Related	653.29			653.29
Total Supplies	\$2,352.28			\$2,352.28
Total 2220 Technology Support Services	\$2,352.28			\$2,352.28

LEA : 124157802 Tredyffrin-Easttown SD

Printed 12/5/2022 9:02:03 AM

General Fund (10)

2230 Educational Television Services	<u>Elementary</u>	<u>Secondary</u>	<u>Federal</u>	<u>Total</u>
100 <u>Personnel Services – Salaries</u>				
100 Personnel Services – Salaries		82,081.50		82,081.50
Total Personnel Services – Salaries		\$82,081.50		\$82,081.50
200 <u>Personnel Services – Employee Benefits</u>				
210 Group Insurance – Contracted Provider		1,501.46		1,501.46
220 Social Security Contributions		6,283.96		6,283.96
230 PSERS Retirement Contributions		29,782.34		29,782.34
Total Personnel Services – Employee Benefits		\$37,567.76		\$37,567.76
600 <u>Supplies</u>				
610 General Supplies		16,360.64		16,360.64
640 Books and Periodicals		750.00		750.00
650 Supplies & Fees – Technology Related		964.48		964.48
Total Supplies		\$18,075.12		\$18,075.12
800 <u>Other Objects</u>				
810 Dues and Fees		10.00		10.00
Total Other Objects		\$10.00		\$10.00
Total 2230 Educational Television Services		\$137,734.38		\$137,734.38

LEA : 124157802 Tredyffrin-Easttown SD

Printed 12/5/2022 9:02:03 AM

General Fund (10)

2250 School Library Services	Elementary	Secondary	Federal	Total
100 Personnel Services – Salaries				
100 Personnel Services – Salaries	573,416.74	289,532.67		862,949.41
Total Personnel Services – Salaries	\$573,416.74	\$289,532.67		\$862,949.41
200 Personnel Services – Employee Benefits				
210 Group Insurance – Contracted Provider	114,049.91	67,909.62		181,959.53
220 Social Security Contributions	42,352.44	21,123.95		63,476.39
230 PSERS Retirement Contributions	205,622.39	101,166.48		306,788.87
Total Personnel Services – Employee Benefits	\$362,024.74	\$190,200.05		\$552,224.79
400 Purchased Property Services				
430 Repairs and Maintenance Services	1,804.69			1,804.69
Total Purchased Property Services	\$1,804.69			\$1,804.69
600 Supplies				
610 General Supplies	6,652.81	6,033.38		12,686.19
640 Books and Periodicals	45,947.19	96,610.96		142,558.15
650 Supplies & Fees – Technology Related	7,093.50	9,132.29		16,225.79
Total Supplies	\$59,693.50	\$111,776.63		\$171,470.13
800 Other Objects				
810 Dues and Fees		44.35		44.35
Total Other Objects		\$44.35		\$44.35
Total 2250 School Library Services	\$996,939.67	\$591,553.70		\$1,588,493.37

LEA : 124157802 Tredyffrin-Easttown SD

Printed 12/5/2022 9:02:03 AM

General Fund (10)

2260 Instruction and Curriculum Development Services	<u>Elementary</u>	<u>Secondary</u>	<u>Federal</u>	<u>Total</u>
100 <u>Personnel Services – Salaries</u>				
100 Personnel Services – Salaries	437,344.01	437,344.00	7,280.00	881,968.01
Total Personnel Services – Salaries	\$437,344.01	\$437,344.00	\$7,280.00	\$881,968.01
200 <u>Personnel Services – Employee Benefits</u>				
210 Group Insurance – Contracted Provider	34,436.07	34,436.08		68,872.15
220 Social Security Contributions	30,102.29	30,102.29		60,204.58
230 PSERS Retirement Contributions	142,267.87	142,267.86		284,535.73
250 Unemployment Compensation	56.88	56.88		113.76
260 Workers' Compensation	2,747.66	2,747.65		5,495.31
Total Personnel Services – Employee Benefits	\$209,610.77	\$209,610.76		\$419,221.53
500 <u>Other Purchased Services</u>				
550 Printing and Binding	1,875.81	1,875.82		3,751.63
580 Travel	90.11	90.10		180.21
Total Other Purchased Services	\$1,965.92	\$1,965.92		\$3,931.84
600 <u>Supplies</u>				
610 General Supplies	389.49	389.49		778.98
Total Supplies	\$389.49	\$389.49		\$778.98
800 <u>Other Objects</u>				
810 Dues and Fees	2,824.50	2,824.50		5,649.00
Total Other Objects	\$2,824.50	\$2,824.50		\$5,649.00
Total 2260 Instruction and Curriculum Development Services	\$652,134.69	\$652,134.67	\$7,280.00	\$1,311,549.36

LEA : 124157802 Tredyffrin-Easttown SD

Printed 12/5/2022 9:02:03 AM

General Fund (10)

2270 Instructional Staff Professional Development Services	Elementary	Secondary	Federal	Total
100 <u>Personnel Services – Salaries</u>				
100 Personnel Services – Salaries	265,141.32	265,141.32		530,282.64
Total Personnel Services – Salaries	\$265,141.32	\$265,141.32		\$530,282.64
200 <u>Personnel Services – Employee Benefits</u>				
210 Group Insurance – Contracted Provider	10,694.78	10,694.77		21,389.55
220 Social Security Contributions	16,615.15	16,615.15		33,230.30
230 PSERS Retirement Contributions	83,189.97	83,189.98		166,379.95
240 Tuition Reimbursement	132,420.83	132,420.83		264,841.66
Total Personnel Services – Employee Benefits	\$242,920.73	\$242,920.73		\$485,841.46
300 <u>Purchased Professional and Technical Services</u>				
310 Official / Administrative Services	4,000.00	4,000.00		8,000.00
329 Professional Educational Services – Other	2,668.89	2,668.88	9,432.00	14,769.77
Total Purchased Professional and Technical Services	\$6,668.89	\$6,668.88	\$9,432.00	\$22,769.77
500 <u>Other Purchased Services</u>				
550 Printing and Binding	1,696.41	1,696.42		3,392.83
580 Travel	925.00	925.00		1,850.00
Total Other Purchased Services	\$2,621.41	\$2,621.42		\$5,242.83
600 <u>Supplies</u>				
610 General Supplies	3,860.35	3,860.34		7,720.69
640 Books and Periodicals	419.98	419.99		839.97
650 Supplies & Fees – Technology Related	327.00	327.00		654.00
Total Supplies	\$4,607.33	\$4,607.33		\$9,214.66
800 <u>Other Objects</u>				
810 Dues and Fees	7,120.00	7,120.00		14,240.00
Total Other Objects	\$7,120.00	\$7,120.00		\$14,240.00
Total 2270 Instructional Staff Professional Development Services	\$529,079.68	\$529,079.68	\$9,432.00	\$1,067,591.36

LEA : 124157802 Tredyffrin-Easttown SD

Printed 12/5/2022 9:02:03 AM

General Fund (10)

2280 Nonpublic Support Services

300 Purchased Professional and Technical Services

	<u>Elementary</u>	<u>Secondary</u>	<u>Federal</u>	<u>Total</u>
322 Professional Educational Services – lus			7,173.45	7,173.45
Total Purchased Professional and Technical Services			\$7,173.45	\$7,173.45
Total 2280 Nonpublic Support Services			\$7,173.45	\$7,173.45

LEA : 124157802 Tredyffrin-Easttown SD

Printed 12/5/2022 9:02:03 AM

General Fund (10)

2290 Other Instructional Staff Services	<u>Elementary</u>	<u>Secondary</u>	<u>Federal</u>	<u>Total</u>
300 <u>Purchased Professional and Technical Services</u>				
340 Technical Services	750.00	750.00		1,500.00
Total Purchased Professional and Technical Services	\$750.00	\$750.00		\$1,500.00
500 <u>Other Purchased Services</u>				
580 Travel	400.00	399.00		799.00
Total Other Purchased Services	\$400.00	\$399.00		\$799.00
600 <u>Supplies</u>				
610 General Supplies		1,241.20		1,241.20
640 Books and Periodicals	46.57	46.57		93.14
Total Supplies	\$46.57	\$1,287.77		\$1,334.34
Total 2290 Other Instructional Staff Services	\$1,196.57	\$2,436.77		\$3,633.34

LEA : 124157802 Tredyffrin-Easttown SD

Printed 12/5/2022 9:02:03 AM

General Fund (10)

2300 Support Services – Administration	Elementary	Secondary	Federal	Total
100 Personnel Services – Salaries				
100 Personnel Services – Salaries	1,928,201.92	2,152,581.50		4,915,087.95
Total Personnel Services – Salaries	\$1,928,201.92	\$2,152,581.50		\$4,915,087.95
200 Personnel Services – Employee Benefits				
210 Group Insurance – Contracted Provider	191,499.65	261,255.68		541,598.21
220 Social Security Contributions	126,238.46	150,741.56		324,811.16
230 PSERS Retirement Contributions	621,167.92	696,543.28		1,595,469.79
250 Unemployment Compensation	85.33	85.33		170.66
260 Workers' Compensation	4,251.02	4,251.01		8,502.03
Total Personnel Services – Employee Benefits	\$943,242.38	\$1,112,876.86		\$2,470,551.85
300 Purchased Professional and Technical Services				
329 Professional Educational Services – Other	9,608.14	9,908.14		19,516.28
330 Other Professional Services				529,575.59
340 Technical Services				101,285.43
350 Security / Safety Services				16,108.00
Total Purchased Professional and Technical Services	\$9,608.14	\$9,908.14		\$666,485.30
400 Purchased Property Services				
430 Repairs and Maintenance Services	5,258.45	23,679.67		28,938.12
440 Rentals	661.36	661.37		13,861.23
Total Purchased Property Services	\$5,919.81	\$24,341.04		\$42,799.35
500 Other Purchased Services				
520 Insurance – General				383,179.96
530 Communications	1,162.36	1,162.36		60,987.64
541 Advertising Related to Federal Grant Awards				10,244.95
549 Other Advertising/Public Relations				15,092.79
550 Printing and Binding	2,017.88	2,017.87		7,939.70
580 Travel	40.00	10,082.07		10,703.81
Total Other Purchased Services	\$3,220.24	\$13,262.30		\$488,148.85
600 Supplies				
610 General Supplies	14,019.89	12,145.92		37,494.68
630 Food				1,845.10
640 Books and Periodicals	1,252.18	4,380.08		7,495.26
650 Supplies & Fees – Technology Related	1,507.25	2,333.75		4,784.00
Total Supplies	\$16,779.32	\$18,859.75		\$51,619.04
800 Other Objects				
810 Dues and Fees	209.50	209.50		18,398.42
Total Other Objects	\$209.50	\$209.50		\$18,398.42
Total 2300 Support Services – Administration	\$2,907,181.31	\$3,332,039.09		\$8,653,090.76

LEA : 124157802 Tredyffrin-Easttown SD

Printed 12/5/2022 9:02:03 AM

General Fund (10)

2310 Board Services

Elementary Secondary Federal Total

300 <u>Purchased Professional and Technical Services</u>				
350 Security / Safety Services				16,108.00
Total Purchased Professional and Technical Services				\$16,108.00
500 <u>Other Purchased Services</u>				
520 Insurance – General				239,845.68
541 Advertising Related to Federal Grant Awards				10,244.95
Total Other Purchased Services				\$250,090.63
600 <u>Supplies</u>				
610 General Supplies				901.42
630 Food				1,845.10
640 Books and Periodicals				1,863.00
Total Supplies				\$4,609.52
800 <u>Other Objects</u>				
810 Dues and Fees				13,360.42
Total Other Objects				\$13,360.42
Total 2310 Board Services				\$284,168.57

LEA : 124157802 Tredyffrin-Easttown SD

Printed 12/5/2022 9:02:03 AM

General Fund (10)				
2320 Board Treasurer Services	<u>Elementary</u>	<u>Secondary</u>	<u>Federal</u>	<u>Total</u>
500 <u>Other Purchased Services</u>				
520 Insurance – General				143,334.28
Total Other Purchased Services				\$143,334.28
Total 2320 Board Treasurer Services				\$143,334.28

LEA : 124157802 Tredyffrin-Easttown SD

Printed 12/5/2022 9:02:03 AM

General Fund (10)

2330 Tax Assessment and Collection Services	<u>Elementary</u>	<u>Secondary</u>	<u>Federal</u>	<u>Total</u>
100 <u>Personnel Services – Salaries</u>				
100 Personnel Services – Salaries				55,664.65
Total Personnel Services – Salaries				\$55,664.65
200 <u>Personnel Services – Employee Benefits</u>				
210 Group Insurance – Contracted Provider				21,512.91
220 Social Security Contributions				4,157.02
230 PSERS Retirement Contributions				19,486.47
Total Personnel Services – Employee Benefits				\$45,156.40
300 <u>Purchased Professional and Technical Services</u>				
340 Technical Services				101,285.43
Total Purchased Professional and Technical Services				\$101,285.43
500 <u>Other Purchased Services</u>				
530 Communications				6,566.14
550 Printing and Binding				2,924.45
Total Other Purchased Services				\$9,490.59
600 <u>Supplies</u>				
610 General Supplies				3,898.30
Total Supplies				\$3,898.30
Total 2330 Tax Assessment and Collection Services				\$215,495.37

LEA : 124157802 Tredyffrin-Easttown SD

Printed 12/5/2022 9:02:03 AM

General Fund (10)

2340 Staff Relations and Negotiations Services

<u>Elementary</u>	<u>Secondary</u>	<u>Federal</u>	<u>Total</u>
-------------------	------------------	----------------	--------------

300 Purchased Professional and Technical Services

330 Other Professional Services			40,184.50
---------------------------------	--	--	-----------

Total Purchased Professional and Technical Services			\$40,184.50
--	--	--	--------------------

400 Purchased Property Services

440 Rentals			1,788.00
-------------	--	--	----------

Total Purchased Property Services			\$1,788.00
--	--	--	-------------------

500 Other Purchased Services

549 Other Advertising/Public Relations			15,092.79
--	--	--	-----------

550 Printing and Binding			979.50
--------------------------	--	--	--------

580 Travel			581.74
------------	--	--	--------

Total Other Purchased Services			\$16,654.03
---------------------------------------	--	--	--------------------

600 Supplies

610 General Supplies			3,776.93
----------------------	--	--	----------

650 Supplies & Fees – Technology Related			682.00
--	--	--	--------

Total Supplies			\$4,458.93
-----------------------	--	--	-------------------

800 Other Objects

810 Dues and Fees			2,729.00
-------------------	--	--	----------

Total Other Objects			\$2,729.00
----------------------------	--	--	-------------------

Total 2340 Staff Relations and Negotiations Services			\$65,814.46
---	--	--	--------------------

LEA : 124157802 Tredyffrin-Easttown SD

Printed 12/5/2022 9:02:03 AM

General Fund (10)

2350 Legal and Accounting Services	<u>Elementary</u>	<u>Secondary</u>	<u>Federal</u>	<u>Total</u>
300 <u>Purchased Professional and Technical Services</u>				
330 Other Professional Services				480,889.52
Total Purchased Professional and Technical Services				\$480,889.52
Total 2350 Legal and Accounting Services				\$480,889.52

LEA : 124157802 Tredyffrin-Easttown SD

Printed 12/5/2022 9:02:03 AM

General Fund (10)				
2360 Office of the Superintendent / Executive Director Services	<u>Elementary</u>	<u>Secondary</u>	<u>Federal</u>	<u>Total</u>
100 <u>Personnel Services – Salaries</u>				
100 Personnel Services – Salaries				616,637.13
Total Personnel Services – Salaries				\$616,637.13
200 <u>Personnel Services – Employee Benefits</u>				
210 Group Insurance – Contracted Provider				44,886.68
220 Social Security Contributions				31,708.58
230 PSERS Retirement Contributions				202,148.33
Total Personnel Services – Employee Benefits				\$278,743.59
400 <u>Purchased Property Services</u>				
440 Rentals				10,750.50
Total Purchased Property Services				\$10,750.50
600 <u>Supplies</u>				
610 General Supplies				2,529.90
650 Supplies & Fees – Technology Related				171.00
Total Supplies				\$2,700.90
Total 2360 Office of the Superintendent / Executive Director Services				\$908,832.12

LEA : 124157802 Tredyffrin-Easttown SD

Printed 12/5/2022 9:02:03 AM

General Fund (10)				
2370 Community Relations Services	<u>Elementary</u>	<u>Secondary</u>	<u>Federal</u>	<u>Total</u>
100 <u>Personnel Services – Salaries</u>				
100 Personnel Services – Salaries				162,002.75
Total Personnel Services – Salaries				\$162,002.75
200 <u>Personnel Services – Employee Benefits</u>				
210 Group Insurance – Contracted Provider				22,443.29
220 Social Security Contributions				11,965.54
230 PSERS Retirement Contributions				56,123.79
Total Personnel Services – Employee Benefits				\$90,532.62
300 <u>Purchased Professional and Technical Services</u>				
330 Other Professional Services				8,501.57
Total Purchased Professional and Technical Services				\$8,501.57
500 <u>Other Purchased Services</u>				
530 Communications				52,096.78
Total Other Purchased Services				\$52,096.78
600 <u>Supplies</u>				
650 Supplies & Fees – Technology Related				90.00
Total Supplies				\$90.00
800 <u>Other Objects</u>				
810 Dues and Fees				390.00
Total Other Objects				\$390.00
Total 2370 Community Relations Services				\$313,613.72

LEA : 124157802 Tredyffrin-Easttown SD

Printed 12/5/2022 9:02:03 AM

General Fund (10)

2380 Office of the Principal Services	Elementary	Secondary	Federal	Total
100 <u>Personnel Services – Salaries</u>				
100 Personnel Services – Salaries	1,928,201.92	2,152,581.50		4,080,783.42
Total Personnel Services – Salaries	\$1,928,201.92	\$2,152,581.50		\$4,080,783.42
200 <u>Personnel Services – Employee Benefits</u>				
210 Group Insurance – Contracted Provider	191,499.65	261,255.68		452,755.33
220 Social Security Contributions	126,238.46	150,741.56		276,980.02
230 PSERS Retirement Contributions	621,167.92	696,543.28		1,317,711.20
250 Unemployment Compensation	85.33	85.33		170.66
260 Workers' Compensation	4,251.02	4,251.01		8,502.03
Total Personnel Services – Employee Benefits	\$943,242.38	\$1,112,876.86		\$2,056,119.24
300 <u>Purchased Professional and Technical Services</u>				
329 Professional Educational Services – Other	9,608.14	9,908.14		19,516.28
Total Purchased Professional and Technical Services	\$9,608.14	\$9,908.14		\$19,516.28
400 <u>Purchased Property Services</u>				
430 Repairs and Maintenance Services	5,258.45	23,679.67		28,938.12
440 Rentals	661.36	661.37		1,322.73
Total Purchased Property Services	\$5,919.81	\$24,341.04		\$30,260.85
500 <u>Other Purchased Services</u>				
530 Communications	1,162.36	1,162.36		2,324.72
550 Printing and Binding	2,017.88	2,017.87		4,035.75
580 Travel	40.00	10,082.07		10,122.07
Total Other Purchased Services	\$3,220.24	\$13,262.30		\$16,482.54
600 <u>Supplies</u>				
610 General Supplies	14,019.89	12,145.92		26,165.81
640 Books and Periodicals	1,252.18	4,380.08		5,632.26
650 Supplies & Fees – Technology Related	1,507.25	2,333.75		3,841.00
Total Supplies	\$16,779.32	\$18,859.75		\$35,639.07
800 <u>Other Objects</u>				
810 Dues and Fees	209.50	209.50		419.00
Total Other Objects	\$209.50	\$209.50		\$419.00
Total 2380 Office of the Principal Services	\$2,907,181.31	\$3,332,039.09		\$6,239,220.40

LEA : 124157802 Tredyffrin-Easttown SD

Printed 12/5/2022 9:02:03 AM

General Fund (10)

2390 Other Administration Services	<u>Elementary</u>	<u>Secondary</u>	<u>Federal</u>	<u>Total</u>
600 <u>Supplies</u>				
610 General Supplies				222.32
Total Supplies				\$222.32
800 <u>Other Objects</u>				
810 Dues and Fees				1,500.00
Total Other Objects				\$1,500.00
Total 2390 Other Administration Services				\$1,722.32

LEA : 124157802 Tredyffrin-Easttown SD

Printed 12/5/2022 9:02:03 AM

General Fund (10)				
2400 Support Services – Pupil Health	<u>Elementary</u>	<u>Secondary</u>	<u>Federal</u>	<u>Total</u>
100 <u>Personnel Services – Salaries</u>				
100 Personnel Services – Salaries				829,168.19
Total Personnel Services – Salaries				\$829,168.19
200 <u>Personnel Services – Employee Benefits</u>				
210 Group Insurance – Contracted Provider				165,600.71
220 Social Security Contributions				61,168.88
230 PSERS Retirement Contributions				285,246.69
250 Unemployment Compensation				28.44
260 Workers' Compensation				1,427.57
Total Personnel Services – Employee Benefits				\$513,472.29
300 <u>Purchased Professional and Technical Services</u>				
329 Professional Educational Services – Other			134,310.26	496,672.52
Total Purchased Professional and Technical Services			\$134,310.26	\$496,672.52
400 <u>Purchased Property Services</u>				
430 Repairs and Maintenance Services				595.00
Total Purchased Property Services				\$595.00
600 <u>Supplies</u>				
610 General Supplies				43,267.98
650 Supplies & Fees – Technology Related				12,079.35
Total Supplies				\$55,347.33
Total 2400 Support Services – Pupil Health			\$134,310.26	\$1,895,255.33

LEA : 124157802 Tredyffrin-Easttown SD

Printed 12/5/2022 9:02:03 AM

General Fund (10)

2410 Supervision of Health Services	<u>Elementary</u>	<u>Secondary</u>	<u>Federal</u>	<u>Total</u>
100 <u>Personnel Services – Salaries</u>				
100 Personnel Services – Salaries				829,168.19
Total Personnel Services – Salaries				\$829,168.19
200 <u>Personnel Services – Employee Benefits</u>				
210 Group Insurance – Contracted Provider				165,600.71
220 Social Security Contributions				61,168.88
230 PSERS Retirement Contributions				285,246.69
250 Unemployment Compensation				28.44
260 Workers' Compensation				1,427.57
Total Personnel Services – Employee Benefits				\$513,472.29
300 <u>Purchased Professional and Technical Services</u>				
329 Professional Educational Services – Other			20,292.48	126,628.84
Total Purchased Professional and Technical Services			\$20,292.48	\$126,628.84
Total 2410 Supervision of Health Services			\$20,292.48	\$1,469,269.32

LEA : 124157802 Tredyffrin-Easttown SD

Printed 12/5/2022 9:02:03 AM

General Fund (10)

2411 Supervision of Health Services – Head of Component

	<u>Elementary</u>	<u>Secondary</u>	<u>Federal</u>	<u>Total</u>
100 <u>Personnel Services – Salaries</u>				
100 Personnel Services – Salaries				829,168.19
Total Personnel Services – Salaries				\$829,168.19
200 <u>Personnel Services – Employee Benefits</u>				
210 Group Insurance – Contracted Provider				165,600.71
220 Social Security Contributions				61,168.88
230 PSERS Retirement Contributions				285,246.69
250 Unemployment Compensation				28.44
260 Workers' Compensation				1,427.57
Total Personnel Services – Employee Benefits				\$513,472.29
300 <u>Purchased Professional and Technical Services</u>				
329 Professional Educational Services – Other			20,292.48	126,628.84
Total Purchased Professional and Technical Services			\$20,292.48	\$126,628.84
Total 2411 Supervision of Health Services – Head of Component			\$20,292.48	\$1,469,269.32

LEA : 124157802 Tredyffrin-Easttown SD

Printed 12/5/2022 9:02:03 AM

General Fund (10)

2420 Medical Services

<u>Elementary</u>	<u>Secondary</u>	<u>Federal</u>	<u>Total</u>
-------------------	------------------	----------------	--------------

300 Purchased Professional and Technical Services

329 Professional Educational Services – Other			19,600.07
---	--	--	-----------

Total Purchased Professional and Technical Services			\$19,600.07
--	--	--	--------------------

Total 2420 Medical Services			\$19,600.07
------------------------------------	--	--	--------------------

LEA : 124157802 Tredyffrin-Easttown SD

Printed 12/5/2022 9:02:03 AM

General Fund (10)

2430 Dental Services

	<u>Elementary</u>	<u>Secondary</u>	<u>Federal</u>	<u>Total</u>
300 <u>Purchased Professional and Technical Services</u>				
329 Professional Educational Services – Other				918.00
Total Purchased Professional and Technical Services				\$918.00
Total 2430 Dental Services				\$918.00

LEA : 124157802 Tredyffrin-Easttown SD

Printed 12/5/2022 9:02:03 AM

General Fund (10)

2440 Nursing Services

Elementary Secondary Federal Total

300 <u>Purchased Professional and Technical Services</u>				
329 Professional Educational Services – Other			114,017.78	349,525.61
Total Purchased Professional and Technical Services			\$114,017.78	\$349,525.61
400 <u>Purchased Property Services</u>				
430 Repairs and Maintenance Services				595.00
Total Purchased Property Services				\$595.00
600 <u>Supplies</u>				
610 General Supplies				43,267.98
650 Supplies & Fees – Technology Related				12,079.35
Total Supplies				\$55,347.33
Total 2440 Nursing Services			\$114,017.78	\$405,467.94

LEA : 124157802 Tredyffrin-Easttown SD

Printed 12/5/2022 9:02:03 AM

General Fund (10)

2500 Support Services – Business	<u>Elementary</u>	<u>Secondary</u>	<u>Federal</u>	<u>Total</u>
100 <u>Personnel Services – Salaries</u>				
100 Personnel Services – Salaries				754,727.22
Total Personnel Services – Salaries				\$754,727.22
200 <u>Personnel Services – Employee Benefits</u>				
210 Group Insurance – Contracted Provider				224,781.33
220 Social Security Contributions				55,986.94
230 PSERS Retirement Contributions				260,458.61
250 Unemployment Compensation				28.44
260 Workers' Compensation				1,782.05
Total Personnel Services – Employee Benefits				\$543,037.37
300 <u>Purchased Professional and Technical Services</u>				
330 Other Professional Services				26,619.37
Total Purchased Professional and Technical Services				\$26,619.37
400 <u>Purchased Property Services</u>				
430 Repairs and Maintenance Services				432.00
Total Purchased Property Services				\$432.00
500 <u>Other Purchased Services</u>				
550 Printing and Binding				404.56
580 Travel				5,421.01
Total Other Purchased Services				\$5,825.57
600 <u>Supplies</u>				
610 General Supplies				3,289.35
640 Books and Periodicals				346.00
650 Supplies & Fees – Technology Related				37,967.79
Total Supplies				\$41,603.14
800 <u>Other Objects</u>				
810 Dues and Fees				27,856.36
Total Other Objects				\$27,856.36
Total 2500 Support Services – Business				\$1,400,101.03

LEA : 124157802 Tredyffrin-Easttown SD

Printed 12/5/2022 9:02:03 AM

General Fund (10)				
2510 Fiscal Services	<u>Elementary</u>	<u>Secondary</u>	<u>Federal</u>	<u>Total</u>
100 <u>Personnel Services – Salaries</u>				
100 Personnel Services – Salaries				598,610.16
Total Personnel Services – Salaries				\$598,610.16
200 <u>Personnel Services – Employee Benefits</u>				
210 Group Insurance – Contracted Provider				180,210.97
220 Social Security Contributions				44,364.40
230 PSERS Retirement Contributions				206,387.44
250 Unemployment Compensation				28.44
260 Workers' Compensation				1,782.05
Total Personnel Services – Employee Benefits				\$432,773.30
300 <u>Purchased Professional and Technical Services</u>				
330 Other Professional Services				26,619.37
Total Purchased Professional and Technical Services				\$26,619.37
500 <u>Other Purchased Services</u>				
550 Printing and Binding				404.56
580 Travel				4,424.99
Total Other Purchased Services				\$4,829.55
600 <u>Supplies</u>				
610 General Supplies				2,499.71
640 Books and Periodicals				346.00
650 Supplies & Fees – Technology Related				37,837.79
Total Supplies				\$40,683.50
800 <u>Other Objects</u>				
810 Dues and Fees				27,856.36
Total Other Objects				\$27,856.36
Total 2510 Fiscal Services				\$1,131,372.24

LEA : 124157802 Tredyffrin-Easttown SD

Printed 12/5/2022 9:02:03 AM

General Fund (10)

2511 Supervision of Fiscal Services - Head of Component

	<u>Elementary</u>	<u>Secondary</u>	<u>Federal</u>	<u>Total</u>
100 <u>Personnel Services – Salaries</u>				
100 Personnel Services – Salaries				598,610.16
Total Personnel Services – Salaries				\$598,610.16
200 <u>Personnel Services – Employee Benefits</u>				
210 Group Insurance – Contracted Provider				180,210.97
220 Social Security Contributions				44,364.40
230 PSERS Retirement Contributions				206,387.44
250 Unemployment Compensation				28.44
260 Workers' Compensation				1,782.05
Total Personnel Services – Employee Benefits				\$432,773.30
300 <u>Purchased Professional and Technical Services</u>				
330 Other Professional Services				26,619.37
Total Purchased Professional and Technical Services				\$26,619.37
500 <u>Other Purchased Services</u>				
550 Printing and Binding				404.56
580 Travel				4,424.99
Total Other Purchased Services				\$4,829.55
600 <u>Supplies</u>				
610 General Supplies				2,499.71
640 Books and Periodicals				346.00
650 Supplies & Fees – Technology Related				37,837.79
Total Supplies				\$40,683.50
800 <u>Other Objects</u>				
810 Dues and Fees				27,856.36
Total Other Objects				\$27,856.36
Total 2511 Supervision of Fiscal Services - Head of Component				\$1,131,372.24

LEA : 124157802 Tredyffrin-Easttown SD

Printed 12/5/2022 9:02:03 AM

General Fund (10)

2520 Purchasing Services

Elementary Secondary Federal Total

100 <u>Personnel Services – Salaries</u>				
100 Personnel Services – Salaries				156,117.06
Total Personnel Services – Salaries				\$156,117.06
200 <u>Personnel Services – Employee Benefits</u>				
210 Group Insurance – Contracted Provider				44,570.36
220 Social Security Contributions				11,622.54
230 PSERS Retirement Contributions				54,071.17
Total Personnel Services – Employee Benefits				\$110,264.07
400 <u>Purchased Property Services</u>				
430 Repairs and Maintenance Services				432.00
Total Purchased Property Services				\$432.00
500 <u>Other Purchased Services</u>				
580 Travel				996.02
Total Other Purchased Services				\$996.02
600 <u>Supplies</u>				
610 General Supplies				789.64
650 Supplies & Fees – Technology Related				130.00
Total Supplies				\$919.64
Total 2520 Purchasing Services				\$268,728.79

LEA : 124157802 Tredyffrin-Easttown SD

Printed 12/5/2022 9:02:03 AM

General Fund (10)				
2600 Operation and Maintenance of Plant Services	<u>Elementary</u>	<u>Secondary</u>	<u>Federal</u>	<u>Total</u>
100 <u>Personnel Services – Salaries</u>				
100 Personnel Services – Salaries				4,979,572.10
Total Personnel Services – Salaries				\$4,979,572.10
200 <u>Personnel Services – Employee Benefits</u>				
210 Group Insurance – Contracted Provider				930,529.18
220 Social Security Contributions				373,949.82
230 PSERS Retirement Contributions				1,684,840.56
250 Unemployment Compensation				255.97
260 Workers' Compensation				10,396.97
299 All Other Employee Benefits				20,874.58
Total Personnel Services – Employee Benefits				\$3,020,847.08
300 <u>Purchased Professional and Technical Services</u>				
390 Other Purchased Professional and Technical Services				94,697.13
Total Purchased Professional and Technical Services				\$94,697.13
400 <u>Purchased Property Services</u>				
410 Cleaning Services				106,385.79
420 Utility Services				1,016,426.56
430 Repairs and Maintenance Services				1,391,431.83
440 Rentals				51,515.02
Total Purchased Property Services				\$2,565,759.20
500 <u>Other Purchased Services</u>				
522 Automotive Liability Insurance				30,493.00
523 General Property and Liability Insurance				126,448.82
530 Communications				129,253.10
550 Printing and Binding				27.86
580 Travel				13.46
Total Other Purchased Services				\$286,236.24
600 <u>Supplies</u>				
610 General Supplies	405,603.73	450,822.49		856,426.22
620 Energy				399,155.87
640 Books and Periodicals				8,284.82
650 Supplies & Fees – Technology Related				672.00
Total Supplies	\$405,603.73	\$450,822.49		\$1,264,538.91
700 <u>Property</u>				
752 Capital Equipment – Original and Additional				89,055.12
762 Capitalized Equipment - Replacement				8,756.00
Total Property				\$97,811.12
800 <u>Other Objects</u>				
810 Dues and Fees				29,571.52
Total Other Objects				\$29,571.52
Total 2600 Operation and Maintenance of Plant Services	\$405,603.73	\$450,822.49		\$12,339,033.30

LEA : 124157802 Tredyffrin-Easttown SD

Printed 12/5/2022 9:02:03 AM

General Fund (10)

2610 Supervision of Operation and Maintenance of Plant Services	Elementary	Secondary	Federal	Total
100 <u>Personnel Services – Salaries</u>				
100 Personnel Services – Salaries				4,828,085.29
Total Personnel Services – Salaries				\$4,828,085.29
200 <u>Personnel Services – Employee Benefits</u>				
210 Group Insurance – Contracted Provider				905,101.55
220 Social Security Contributions				363,266.60
230 PSERS Retirement Contributions				1,634,410.31
250 Unemployment Compensation				255.97
260 Workers' Compensation				10,396.97
299 All Other Employee Benefits				20,874.58
Total Personnel Services – Employee Benefits				\$2,934,305.98
300 <u>Purchased Professional and Technical Services</u>				
390 Other Purchased Professional and Technical Services				94,697.13
Total Purchased Professional and Technical Services				\$94,697.13
400 <u>Purchased Property Services</u>				
410 Cleaning Services				106,385.79
420 Utility Services				1,016,426.56
430 Repairs and Maintenance Services				1,391,431.83
440 Rentals				51,515.02
Total Purchased Property Services				\$2,565,759.20
500 <u>Other Purchased Services</u>				
522 Automotive Liability Insurance				30,493.00
523 General Property and Liability Insurance				126,448.82
530 Communications				129,253.10
550 Printing and Binding				27.86
580 Travel				13.46
Total Other Purchased Services				\$286,236.24
600 <u>Supplies</u>				
610 General Supplies	405,603.73	450,822.49		856,426.22
620 Energy				399,155.87
640 Books and Periodicals				8,284.82
650 Supplies & Fees – Technology Related				672.00
Total Supplies	\$405,603.73	\$450,822.49		\$1,264,538.91
700 <u>Property</u>				
752 Capital Equipment – Original and Additional				89,055.12
762 Capitalized Equipment - Replacement				8,756.00
Total Property				\$97,811.12
800 <u>Other Objects</u>				
810 Dues and Fees				29,571.52
Total Other Objects				\$29,571.52
Total 2610 Supervision of Operation and Maintenance of Plant Services	\$405,603.73	\$450,822.49		\$12,101,005.39

LEA : 124157802 Tredyffrin-Easttown SD

Printed 12/5/2022 9:02:03 AM

General Fund (10)

2611 Supervision of Operation and Maintenance of Plant Services – Head of Component	Elementary	Secondary	Federal	Total
100 <u>Personnel Services – Salaries</u>				
100 Personnel Services – Salaries				4,828,085.29
Total Personnel Services – Salaries				\$4,828,085.29
200 <u>Personnel Services – Employee Benefits</u>				
210 Group Insurance – Contracted Provider				905,101.55
220 Social Security Contributions				363,266.60
230 PSERS Retirement Contributions				1,634,410.31
250 Unemployment Compensation				255.97
260 Workers' Compensation				10,396.97
299 All Other Employee Benefits				20,874.58
Total Personnel Services – Employee Benefits				\$2,934,305.98
300 <u>Purchased Professional and Technical Services</u>				
390 Other Purchased Professional and Technical Services				94,697.13
Total Purchased Professional and Technical Services				\$94,697.13
400 <u>Purchased Property Services</u>				
410 Cleaning Services				106,385.79
420 Utility Services				1,016,426.56
430 Repairs and Maintenance Services				1,391,431.83
440 Rentals				51,515.02
Total Purchased Property Services				\$2,565,759.20
500 <u>Other Purchased Services</u>				
522 Automotive Liability Insurance				30,493.00
523 General Property and Liability Insurance				126,448.82
530 Communications				129,253.10
550 Printing and Binding				27.86
580 Travel				13.46
Total Other Purchased Services				\$286,236.24
600 <u>Supplies</u>				
610 General Supplies	405,603.73	450,822.49		856,426.22
620 Energy				399,155.87
640 Books and Periodicals				8,284.82
650 Supplies & Fees – Technology Related				672.00
Total Supplies	\$405,603.73	\$450,822.49		\$1,264,538.91
700 <u>Property</u>				
752 Capital Equipment – Original and Additional				89,055.12
762 Capitalized Equipment - Replacement				8,756.00
Total Property				\$97,811.12
800 <u>Other Objects</u>				
810 Dues and Fees				29,571.52
Total Other Objects				\$29,571.52
Total 2611 Supervision of Operation and Maintenance of Plant Services – Head of Component	\$405,603.73	\$450,822.49		\$12,101,005.39

LEA : 124157802 Tredyffrin-Easttown SD

Printed 12/5/2022 9:02:03 AM

General Fund (10)

2660 Safety and Security Services	<u>Elementary</u>	<u>Secondary</u>	<u>Federal</u>	<u>Total</u>
100 <u>Personnel Services – Salaries</u>				
100 Personnel Services – Salaries				151,486.81
Total Personnel Services – Salaries				\$151,486.81
200 <u>Personnel Services – Employee Benefits</u>				
210 Group Insurance – Contracted Provider				25,427.63
220 Social Security Contributions				10,683.22
230 PSERS Retirement Contributions				50,430.25
Total Personnel Services – Employee Benefits				\$86,541.10
Total 2660 Safety and Security Services				\$238,027.91

LEA : 124157802 Tredyffrin-Easttown SD

Printed 12/5/2022 9:02:03 AM

General Fund (10)

2700 Student Transportation Services	<u>Elementary</u>	<u>Secondary</u>	<u>Federal</u>	<u>Total</u>
100 <u>Personnel Services – Salaries</u>				
100 Personnel Services – Salaries				284,670.23
Total Personnel Services – Salaries				\$284,670.23
200 <u>Personnel Services – Employee Benefits</u>				
210 Group Insurance – Contracted Provider				56,817.59
220 Social Security Contributions				21,589.88
230 PSERS Retirement Contributions				93,480.82
250 Unemployment Compensation				28.44
260 Workers' Compensation				2,445.50
Total Personnel Services – Employee Benefits				\$174,362.23
400 <u>Purchased Property Services</u>				
430 Repairs and Maintenance Services				328.50
440 Rentals				9,200.00
Total Purchased Property Services				\$9,528.50
500 <u>Other Purchased Services</u>				
513 Contracted Carriers				5,349,595.26
516 Student Transportation Services From the IU				19,024.39
580 Travel				481.70
Total Other Purchased Services				\$5,369,101.35
600 <u>Supplies</u>				
610 General Supplies				7,085.71
620 Energy				397,457.97
650 Supplies & Fees – Technology Related				160.00
Total Supplies				\$404,703.68
800 <u>Other Objects</u>				
810 Dues and Fees				320.00
Total Other Objects				\$320.00
Total 2700 Student Transportation Services				\$6,242,685.99

LEA : 124157802 Tredyffrin-Easttown SD

Printed 12/5/2022 9:02:03 AM

General Fund (10)

2710 Supervision of Student Transportation Services

Elementary Secondary Federal Total

100 <u>Personnel Services – Salaries</u>				
100 Personnel Services – Salaries				284,670.23
Total Personnel Services – Salaries				\$284,670.23
200 <u>Personnel Services – Employee Benefits</u>				
210 Group Insurance – Contracted Provider				56,817.59
220 Social Security Contributions				21,589.88
230 PSERS Retirement Contributions				93,480.82
250 Unemployment Compensation				28.44
260 Workers' Compensation				2,445.50
Total Personnel Services – Employee Benefits				\$174,362.23
400 <u>Purchased Property Services</u>				
430 Repairs and Maintenance Services				328.50
440 Rentals				9,200.00
Total Purchased Property Services				\$9,528.50
500 <u>Other Purchased Services</u>				
513 Contracted Carriers				4,459,677.96
516 Student Transportation Services From the IU				19,024.39
580 Travel				481.70
Total Other Purchased Services				\$4,479,184.05
600 <u>Supplies</u>				
610 General Supplies				7,085.71
620 Energy				397,457.97
650 Supplies & Fees – Technology Related				160.00
Total Supplies				\$404,703.68
800 <u>Other Objects</u>				
810 Dues and Fees				320.00
Total Other Objects				\$320.00
Total 2710 Supervision of Student Transportation Services				\$5,352,768.69

LEA : 124157802 Tredyffrin-Easttown SD

Printed 12/5/2022 9:02:03 AM

General Fund (10)

2711 Supervision of Student Transportation Services – Head of Component	<u>Elementary</u>	<u>Secondary</u>	<u>Federal</u>	<u>Total</u>
100 <u>Personnel Services – Salaries</u>				
100 Personnel Services – Salaries				284,670.23
Total Personnel Services – Salaries				\$284,670.23
200 <u>Personnel Services – Employee Benefits</u>				
210 Group Insurance – Contracted Provider				56,817.59
220 Social Security Contributions				21,589.88
230 PSERS Retirement Contributions				93,480.82
250 Unemployment Compensation				28.44
260 Workers' Compensation				2,445.50
Total Personnel Services – Employee Benefits				\$174,362.23
400 <u>Purchased Property Services</u>				
430 Repairs and Maintenance Services				328.50
440 Rentals				9,200.00
Total Purchased Property Services				\$9,528.50
500 <u>Other Purchased Services</u>				
513 Contracted Carriers				4,459,677.96
516 Student Transportation Services From the IU				19,024.39
580 Travel				481.70
Total Other Purchased Services				\$4,479,184.05
600 <u>Supplies</u>				
610 General Supplies				7,085.71
620 Energy				397,457.97
650 Supplies & Fees – Technology Related				160.00
Total Supplies				\$404,703.68
800 <u>Other Objects</u>				
810 Dues and Fees				320.00
Total Other Objects				\$320.00
Total 2711 Supervision of Student Transportation Services – Head of Component				\$5,352,768.69

LEA : 124157802 Tredyffrin-Easttown SD

Printed 12/5/2022 9:02:03 AM

General Fund (10)

2750 Nonpublic Transportation	<u>Elementary</u>	<u>Secondary</u>	<u>Federal</u>	<u>Total</u>
500 <u>Other Purchased Services</u>				
513 Contracted Carriers				889,917.30
Total Other Purchased Services				\$889,917.30
Total 2750 Nonpublic Transportation				\$889,917.30

LEA : 124157802 Tredyffrin-Easttown SD

Printed 12/5/2022 9:02:03 AM

General Fund (10)				
2800 Support Services – Central	<u>Elementary</u>	<u>Secondary</u>	<u>Federal</u>	<u>Total</u>
100 <u>Personnel Services – Salaries</u>				
100 Personnel Services – Salaries				1,460,765.01
Total Personnel Services – Salaries				\$1,460,765.01
200 <u>Personnel Services – Employee Benefits</u>				
210 Group Insurance – Contracted Provider				221,910.44
220 Social Security Contributions				101,120.33
230 PSERS Retirement Contributions				463,378.75
250 Unemployment Compensation				28.44
260 Workers' Compensation				1,528.86
Total Personnel Services – Employee Benefits				\$787,966.82
300 <u>Purchased Professional and Technical Services</u>				
329 Professional Educational Services – Other				74,238.53
330 Other Professional Services				1,092.00
340 Technical Services				322,629.55
Total Purchased Professional and Technical Services				\$397,960.08
400 <u>Purchased Property Services</u>				
430 Repairs and Maintenance Services				116,481.51
440 Rentals				125,868.65
Total Purchased Property Services				\$242,350.16
500 <u>Other Purchased Services</u>				
530 Communications				25,016.85
580 Travel				2,063.49
Total Other Purchased Services				\$27,080.34
600 <u>Supplies</u>				
610 General Supplies				27,164.19
640 Books and Periodicals				119,981.81
650 Supplies & Fees – Technology Related				235,447.81
Total Supplies				\$382,593.81
700 <u>Property</u>				
756 Capitalized Technology Equipment – Original				23,116.00
758 Capitalized Technology Software - Original				24,230.00
Total Property				\$47,346.00
800 <u>Other Objects</u>				
810 Dues and Fees				230.00
Total Other Objects				\$230.00
Total 2800 Support Services – Central				\$3,346,292.22

LEA : 124157802 Tredyffrin-Easttown SD

Printed 12/5/2022 9:02:03 AM

General Fund (10)

2810 Planning, Research, Development and Evaluation Services	<u>Elementary</u>	<u>Secondary</u>	<u>Federal</u>	<u>Total</u>
300 <u>Purchased Professional and Technical Services</u>				
329 Professional Educational Services – Other				8,635.00
Total Purchased Professional and Technical Services				\$8,635.00
Total 2810 Planning, Research, Development and Evaluation Services				\$8,635.00

LEA : 124157802 Tredyffrin-Easttown SD

Printed 12/5/2022 9:02:03 AM

General Fund (10)

2830 Staff Services

	<u>Elementary</u>	<u>Secondary</u>	<u>Federal</u>	<u>Total</u>
100 <u>Personnel Services – Salaries</u>				
100 Personnel Services – Salaries				464,730.36
Total Personnel Services – Salaries				\$464,730.36
200 <u>Personnel Services – Employee Benefits</u>				
210 Group Insurance – Contracted Provider				45,007.72
220 Social Security Contributions				26,311.44
230 PSERS Retirement Contributions				132,165.01
250 Unemployment Compensation				28.44
260 Workers' Compensation				1,528.86
Total Personnel Services – Employee Benefits				\$205,041.47
300 <u>Purchased Professional and Technical Services</u>				
329 Professional Educational Services – Other				44,564.66
330 Other Professional Services				1,092.00
Total Purchased Professional and Technical Services				\$45,656.66
Total 2830 Staff Services				\$715,428.49

LEA : 124157802 Tredyffrin-Easttown SD

Printed 12/5/2022 9:02:03 AM

General Fund (10)

2831 Supervision of Staff Services

Elementary Secondary Federal Total

100 <u>Personnel Services – Salaries</u>				
100 Personnel Services – Salaries				464,730.36
Total Personnel Services – Salaries				\$464,730.36
200 <u>Personnel Services – Employee Benefits</u>				
210 Group Insurance – Contracted Provider				45,007.72
220 Social Security Contributions				26,311.44
230 PSERS Retirement Contributions				132,165.01
250 Unemployment Compensation				28.44
260 Workers' Compensation				1,528.86
Total Personnel Services – Employee Benefits				\$205,041.47
300 <u>Purchased Professional and Technical Services</u>				
329 Professional Educational Services – Other				44,564.66
330 Other Professional Services				1,092.00
Total Purchased Professional and Technical Services				\$45,656.66
Total 2831 Supervision of Staff Services				\$715,428.49

LEA : 124157802 Tredyffrin-Easttown SD

Printed 12/5/2022 9:02:03 AM

General Fund (10)

2840 Data Processing Services	Elementary	Secondary	Federal	Total
100 <u>Personnel Services – Salaries</u>				
100 Personnel Services – Salaries				969,451.05
Total Personnel Services – Salaries				\$969,451.05
200 <u>Personnel Services – Employee Benefits</u>				
210 Group Insurance – Contracted Provider				176,861.92
220 Social Security Contributions				72,763.70
230 PSERS Retirement Contributions				329,265.39
Total Personnel Services – Employee Benefits				\$578,891.01
300 <u>Purchased Professional and Technical Services</u>				
340 Technical Services				322,629.55
Total Purchased Professional and Technical Services				\$322,629.55
400 <u>Purchased Property Services</u>				
430 Repairs and Maintenance Services				116,481.51
440 Rentals				1,307.07
Total Purchased Property Services				\$117,788.58
500 <u>Other Purchased Services</u>				
580 Travel				2,063.49
Total Other Purchased Services				\$2,063.49
600 <u>Supplies</u>				
610 General Supplies				23,890.66
640 Books and Periodicals				114,362.52
650 Supplies & Fees – Technology Related				225,525.81
Total Supplies				\$363,778.99
700 <u>Property</u>				
756 Capitalized Technology Equipment – Original				23,116.00
758 Capitalized Technology Software - Original				24,230.00
Total Property				\$47,346.00
800 <u>Other Objects</u>				
810 Dues and Fees				230.00
Total Other Objects				\$230.00
Total 2840 Data Processing Services				\$2,402,178.67

LEA : 124157802 Tredyffrin-Easttown SD

Printed 12/5/2022 9:02:03 AM

General Fund (10)

2890 Other Support Services Central	<u>Elementary</u>	<u>Secondary</u>	<u>Federal</u>	<u>Total</u>
100 <u>Personnel Services – Salaries</u>				
100 Personnel Services – Salaries				26,583.60
Total Personnel Services – Salaries				\$26,583.60
200 <u>Personnel Services – Employee Benefits</u>				
210 Group Insurance – Contracted Provider				40.80
220 Social Security Contributions				2,045.19
230 PSERS Retirement Contributions				1,948.35
Total Personnel Services – Employee Benefits				\$4,034.34
300 <u>Purchased Professional and Technical Services</u>				
329 Professional Educational Services – Other				21,038.87
Total Purchased Professional and Technical Services				\$21,038.87
400 <u>Purchased Property Services</u>				
440 Rentals				124,561.58
Total Purchased Property Services				\$124,561.58
500 <u>Other Purchased Services</u>				
530 Communications				25,016.85
Total Other Purchased Services				\$25,016.85
600 <u>Supplies</u>				
610 General Supplies				3,273.53
640 Books and Periodicals				5,619.29
650 Supplies & Fees – Technology Related				9,922.00
Total Supplies				\$18,814.82
Total 2890 Other Support Services Central				\$220,050.06

LEA : 124157802 Tredyffrin-Easttown SD

Printed 12/5/2022 9:02:03 AM

General Fund (10)

2900 Other Support Services	<u>Elementary</u>	<u>Secondary</u>	<u>Federal</u>	<u>Total</u>
100 <u>Personnel Services – Salaries</u>				
100 Personnel Services – Salaries				176,875.87
Total Personnel Services – Salaries				\$176,875.87
200 <u>Personnel Services – Employee Benefits</u>				
210 Group Insurance – Contracted Provider				255,940.33
220 Social Security Contributions				13,462.78
230 PSERS Retirement Contributions				1,468.73
250 Unemployment Compensation				14.22
260 Workers' Compensation				89.32
Total Personnel Services – Employee Benefits				\$270,975.38
300 <u>Purchased Professional and Technical Services</u>				
330 Other Professional Services				22,716.64
Total Purchased Professional and Technical Services				\$22,716.64
500 <u>Other Purchased Services</u>				
595 IU Payments By Withholding				73,576.36
Total Other Purchased Services				\$73,576.36
Total 2900 Other Support Services				\$544,144.25

LEA : 124157802 Tredyffrin-Easttown SD

Printed 12/5/2022 9:02:03 AM

General Fund (10)

2910 Support Services Not Listed Elsewhere In the 2000 Series

Elementary Secondary Federal Total

100 <u>Personnel Services – Salaries</u>				
100 Personnel Services – Salaries				176,875.87
Total Personnel Services – Salaries				\$176,875.87
200 <u>Personnel Services – Employee Benefits</u>				
210 Group Insurance – Contracted Provider				255,940.33
220 Social Security Contributions				13,462.78
230 PSERS Retirement Contributions				1,468.73
250 Unemployment Compensation				14.22
260 Workers' Compensation				89.32
Total Personnel Services – Employee Benefits				\$270,975.38
300 <u>Purchased Professional and Technical Services</u>				
330 Other Professional Services				22,716.64
Total Purchased Professional and Technical Services				\$22,716.64
500 <u>Other Purchased Services</u>				
595 IU Payments By Withholding				73,576.36
Total Other Purchased Services				\$73,576.36
Total 2910 Support Services Not Listed Elsewhere In the 2000 Series				\$544,144.25

LEA : 124157802 Tredyffrin-Easttown SD

Printed 12/5/2022 9:02:10 AM

General Fund (10)

3000 Operation of Non-Instructional Services		Total
100	<u>Personnel Services – Salaries</u>	
100	Personnel Services – Salaries	910,572.85
Total Personnel Services – Salaries		\$910,572.85
200	<u>Personnel Services – Employee Benefits</u>	
210	Group Insurance – Contracted Provider	2,252.99
220	Social Security Contributions	68,416.48
230	PSERS Retirement Contributions	301,827.19
250	Unemployment Compensation	56.88
260	Workers' Compensation	3,145.56
Total Personnel Services – Employee Benefits		\$375,699.10
300	<u>Purchased Professional and Technical Services</u>	
329	Professional Educational Services – Other	86,118.51
340	Technical Services	200,406.18
Total Purchased Professional and Technical Services		\$286,524.69
400	<u>Purchased Property Services</u>	
430	Repairs and Maintenance Services	12,602.93
440	Rentals	34,909.94
Total Purchased Property Services		\$47,512.87
500	<u>Other Purchased Services</u>	
510	Student Transportation Services	118,419.91
520	Insurance – General	34,496.00
580	Travel	2,025.60
Total Other Purchased Services		\$154,941.51
600	<u>Supplies</u>	
610	General Supplies	168,355.98
650	Supplies & Fees – Technology Related	3,000.00
Total Supplies		\$171,355.98
800	<u>Other Objects</u>	
810	Dues and Fees	63,897.26
Total Other Objects		\$63,897.26
Total 3000 Operation of Non-Instructional Services		\$2,010,504.26

LEA : 124157802 Tredyffrin-Easttown SD

Printed 12/5/2022 9:02:10 AM

General Fund (10)

3200 Student Activities

	<u>Elementary</u>	<u>Secondary</u>	<u>Federal</u>	<u>Total</u>
100 <u>Personnel Services – Salaries</u>				
100 Personnel Services – Salaries				910,572.85
Total Personnel Services – Salaries				\$910,572.85
200 <u>Personnel Services – Employee Benefits</u>				
210 Group Insurance – Contracted Provider				2,252.99
220 Social Security Contributions				68,416.48
230 PSERS Retirement Contributions				301,827.19
250 Unemployment Compensation				56.88
260 Workers' Compensation				3,145.56
Total Personnel Services – Employee Benefits				\$375,699.10
300 <u>Purchased Professional and Technical Services</u>				
329 Professional Educational Services – Other				86,118.51
340 Technical Services				200,406.18
Total Purchased Professional and Technical Services				\$286,524.69
400 <u>Purchased Property Services</u>				
430 Repairs and Maintenance Services				12,602.93
440 Rentals				34,909.94
Total Purchased Property Services				\$47,512.87
500 <u>Other Purchased Services</u>				
510 Student Transportation Services				118,419.91
520 Insurance – General				34,496.00
580 Travel				2,025.60
Total Other Purchased Services				\$154,941.51
600 <u>Supplies</u>				
610 General Supplies				168,355.98
650 Supplies & Fees – Technology Related				3,000.00
Total Supplies				\$171,355.98
800 <u>Other Objects</u>				
810 Dues and Fees				63,897.26
Total Other Objects				\$63,897.26
Total 3200 Student Activities				\$2,010,504.26

LEA : 124157802 Tredyffrin-Easttown SD

Printed 12/5/2022 9:02:20 AM

General Fund (10)

5000 Other Expenditures and Financing Uses

Total

800 <u>Other Objects</u>	
830 Interest	2,406,138.85
Total Other Objects	\$2,406,138.85
900 <u>Other Uses of Funds</u>	
910 Redemption of Principal	4,655,516.00
932 Capital Reserve Fund Transfers Applicable To Fund 32	7,000,000.00
Total Other Uses of Funds	\$11,655,516.00
Total 5000 Other Expenditures and Financing Uses	\$14,061,654.85

LEA : 124157802 Tredyffrin-Easttown SD

Printed 12/5/2022 9:02:20 AM

General Fund (10)

5100 Debt Service / Other Expenditures and Financing Uses	<u>Elementary</u>	<u>Secondary</u>	<u>Federal</u>	<u>Total</u>
800 <u>Other Objects</u>				
830 Interest				2,406,138.85
Total Other Objects				\$2,406,138.85
900 <u>Other Uses of Funds</u>				
910 Redemption of Principal				4,655,516.00
Total Other Uses of Funds				\$4,655,516.00
Total 5100 Debt Service / Other Expenditures and Financing Uses				\$7,061,654.85

LEA : 124157802 Tredyffrin-Easttown SD

Printed 12/5/2022 9:02:20 AM

General Fund (10)				
5110 Debt Service	<u>Elementary</u>	<u>Secondary</u>	<u>Federal</u>	<u>Total</u>
800 <u>Other Objects</u>				
830 Interest				2,360,885.85
Total Other Objects				\$2,360,885.85
900 <u>Other Uses of Funds</u>				
910 Redemption of Principal				4,145,000.00
Total Other Uses of Funds				\$4,145,000.00
Total 5110 Debt Service				\$6,505,885.85

LEA : 124157802 Tredyffrin-Easttown SD

Printed 12/5/2022 9:02:20 AM

General Fund (10)

5140 Leases	<u>Elementary</u>	<u>Secondary</u>	<u>Federal</u>	<u>Total</u>
800 <u>Other Objects</u>				
830 Interest				45,253.00
Total Other Objects				\$45,253.00
900 <u>Other Uses of Funds</u>				
910 Redemption of Principal				510,516.00
Total Other Uses of Funds				\$510,516.00
Total 5140 Leases				\$555,769.00

LEA : 124157802 Tredyffrin-Easttown SD

Printed 12/5/2022 9:02:20 AM

General Fund (10)

5200 Interfund Transfers – Out	<u>Elementary</u>	<u>Secondary</u>	<u>Federal</u>	<u>Total</u>
900 <u>Other Uses of Funds</u>				
932 Capital Reserve Fund Transfers Applicable To Fund 32				7,000,000.00
Total Other Uses of Funds				\$7,000,000.00
Total 5200 Interfund Transfers – Out				\$7,000,000.00

LEA : 124157802 Tredyffrin-Easttown SD

Printed 12/5/2022 9:02:20 AM

General Fund (10)

5230 Capital Projects Fund Transfers	<u>Elementary</u>	<u>Secondary</u>	<u>Federal</u>	<u>Total</u>
900 <u>Other Uses of Funds</u>				
932 Capital Reserve Fund Transfers Applicable To Fund 32				7,000,000.00
Total Other Uses of Funds				\$7,000,000.00
Total 5230 Capital Projects Fund Transfers				\$7,000,000.00

LEA : 124157802 Tredyffrin-Easttown SD

Printed 12/5/2022 9:02:07 AM

Other Capital Projects Fund (39)

2000 Support Services

Total

700 <u>Property</u>	
752 Capital Equipment – Original and Additional	646,160.00
Total Property	\$646,160.00
800 <u>Other Objects</u>	
810 Dues and Fees	274,716.00
Total Other Objects	\$274,716.00
Total 2000 Support Services	\$920,876.00

LEA : 124157802 Tredyffrin-Easttown SD

Printed 12/5/2022 9:02:07 AM

Other Capital Projects Fund (39)

2300 Support Services – Administration

Elementary Secondary Federal Total

700 <u>Property</u>				
752 Capital Equipment – Original and Additional				646,160.00
Total Property				\$646,160.00
800 <u>Other Objects</u>				
810 Dues and Fees				274,716.00
Total Other Objects				\$274,716.00
Total 2300 Support Services – Administration				\$920,876.00

LEA : 124157802 Tredyffrin-Easttown SD

Printed 12/5/2022 9:02:07 AM

Other Capital Projects Fund (39)

2360 Office of the Superintendent / Executive Director Services

Elementary

Secondary

Federal

Total

700 Property

752 Capital Equipment – Original and Additional

646,160.00

Total Property				\$646,160.00
Total 2360 Office of the Superintendent / Executive Director Services				\$646,160.00

<u>Elementary</u>	<u>Secondary</u>	<u>Federal</u>	<u>Total</u>
-------------------	------------------	----------------	--------------

<u>Elementary</u>	<u>Secondary</u>	<u>Federal</u>	<u>Total</u>
-------------------	------------------	----------------	--------------

<u>Elementary</u>	<u>Secondary</u>	<u>Federal</u>	<u>Total</u>
-------------------	------------------	----------------	--------------

274,716.00

\$274,716.00

\$274,716.00

LEA : 124157802 Tredyffrin-Easttown SD

Printed 12/5/2022 9:02:15 AM

Other Capital Projects Fund (39)

4000 Facilities Acquisition, Construction and Improvement Services		<u>Total</u>
100 <u>Personnel Services – Salaries</u>		
100 Personnel Services – Salaries	8,906.40	
Total Personnel Services – Salaries	\$8,906.40	
300 <u>Purchased Professional and Technical Services</u>		
390 Other Purchased Professional and Technical Services	1,297,293.55	
Total Purchased Professional and Technical Services	\$1,297,293.55	
400 <u>Purchased Property Services</u>		
430 Repairs and Maintenance Services	12,568,399.10	
450 Construction Services	500,380.83	
Total Purchased Property Services	\$13,068,779.93	
600 <u>Supplies</u>		
610 General Supplies	16,758.93	
Total Supplies	\$16,758.93	
700 <u>Property</u>		
752 Capital Equipment – Original and Additional	1,435,662.20	
758 Capitalized Technology Software - Original	584,320.02	
Total Property	\$2,019,982.22	
Total 4000 Facilities Acquisition, Construction and Improvement Services	\$16,411,721.03	

LEA : 124157802 Tredyffrin-Easttown SD

Printed 12/5/2022 9:02:15 AM

Other Capital Projects Fund (39)

4600 Existing Building Improvement Services	<u>Elementary</u>	<u>Secondary</u>	<u>Federal</u>	<u>Total</u>
100 <u>Personnel Services – Salaries</u>				
100 Personnel Services – Salaries				8,906.40
Total Personnel Services – Salaries				\$8,906.40
300 <u>Purchased Professional and Technical Services</u>				
390 Other Purchased Professional and Technical Services				1,297,293.55
Total Purchased Professional and Technical Services				\$1,297,293.55
400 <u>Purchased Property Services</u>				
430 Repairs and Maintenance Services				12,568,399.10
450 Construction Services				500,380.83
Total Purchased Property Services				\$13,068,779.93
600 <u>Supplies</u>				
610 General Supplies				16,758.93
Total Supplies				\$16,758.93
700 <u>Property</u>				
752 Capital Equipment – Original and Additional				1,435,662.20
758 Capitalized Technology Software - Original				584,320.02
Total Property				\$2,019,982.22
Total 4600 Existing Building Improvement Services				\$16,411,721.03

LEA : 124157802 Tredyffrin-Easttown SD

Printed 12/5/2022 9:02:28 AM

	<u>General Fund(10)</u>	<u>Student Sponsored Activity Fund(21)</u>	<u>Public Purpose Trust(27)</u>	<u>Other Compt Approved (28)</u>	<u>Athletic / Activity(29)</u>
1000 <u>Instruction</u>					
1100 Regular Programs - Elementary / Secondary	67,884,936.37				
1200 Special Programs - Elementary / Secondary	28,837,732.68				
1300 Vocational Education	681,178.00				
1400 Other Instructional Programs - Elementary / Secondary	132,318.05				
1500 Nonpublic School Programs	3,572.00				
Total Instruction	\$97,539,737.10				
2000 <u>Support Services</u>					
2100 Support Services - Students	5,998,837.35				
2200 Support Services - Instructional Staff	4,118,527.54				
2300 Support Services - Administration	8,653,090.76				
2400 Support Services - Pupil Health	1,895,255.33				
2500 Support Services - Business	1,400,101.03				
2600 Operation and Maintenance of Plant Services	12,339,033.30				
2700 Student Transportation Services	6,242,685.99				
2800 Support Services - Central	3,346,292.22				
2900 Other Support Services	544,144.25				
Total Support Services	\$44,537,967.77				
3000 <u>Operation of Non-Instructional Services</u>					
3200 Student Activities	2,010,504.26				
Total Operation of Non-Instructional Services	\$2,010,504.26				
4000 <u>Facilities Acquisition, Construction and Improvement Services</u>					
4600 Existing Building Improvement Services					
Total Facilities Acquisition, Construction and Improvement					
5000 <u>Other Expenditures and Financing Uses</u>					
5100 Debt Service / Other Expenditures and Financing Uses	7,061,654.85				
5200 Interfund Transfers - Out	7,000,000.00				
Total Other Expenditures and Financing Uses	\$14,061,654.85				
TOTAL ACTUAL EXPENDITURES & OTHER FINANCING USES	\$158,149,863.98				

LEA : 124157802 Tredyffrin-Easttown SD

Printed 12/5/2022 9:02:28 AM

	<u>Capital Reserve (690.</u>	<u>Capital Reserve (1431)(32)</u>	<u>Other Capital Projects</u>	<u>Debt Service(40)</u>	<u>Permanent(90)</u>
	<u>1850)(31)</u>		<u>Fund(39)</u>		
1000 <u>Instruction</u>					
1100 Regular Programs - Elementary / Secondary					
1200 Special Programs - Elementary / Secondary					
1300 Vocational Education					
1400 Other Instructional Programs - Elementary / Secondary					
1500 Nonpublic School Programs					
Total Instruction					
2000 <u>Support Services</u>					
2100 Support Services - Students					
2200 Support Services - Instructional Staff					
2300 Support Services - Administration			920,876.00		
2400 Support Services - Pupil Health					
2500 Support Services - Business					
2600 Operation and Maintenance of Plant Services					
2700 Student Transportation Services					
2800 Support Services - Central					
2900 Other Support Services					
Total Support Services			\$920,876.00		
3000 <u>Operation of Non-Instructional Services</u>					
3200 Student Activities					
Total Operation of Non-Instructional Services					
4000 <u>Facilities Acquisition, Construction and Improvement Services</u>					
4600 Existing Building Improvement Services			16,411,721.03		
Total Facilities Acquisition, Construction and Improvement			\$16,411,721.03		
5000 <u>Other Expenditures and Financing Uses</u>					
5100 Debt Service / Other Expenditures and Financing Uses					
5200 Interfund Transfers - Out					
Total Other Expenditures and Financing Uses					
TOTAL ACTUAL EXPENDITURES & OTHER FINANCING USES			\$17,332,597.03		

LEA : 124157802 Tredyffrin-Easttown SD

Printed 12/5/2022 9:02:28 AM

	<u>Total</u>
1000 <u>Instruction</u>	
1100 Regular Programs - Elementary / Secondary	67,884,936.37
1200 Special Programs - Elementary / Secondary	28,837,732.68
1300 Vocational Education	681,178.00
1400 Other Instructional Programs - Elementary / Secondary	132,318.05
1500 Nonpublic School Programs	3,572.00
Total Instruction	\$97,539,737.10
2000 <u>Support Services</u>	
2100 Support Services - Students	5,998,837.35
2200 Support Services - Instructional Staff	4,118,527.54
2300 Support Services - Administration	9,573,966.76
2400 Support Services - Pupil Health	1,895,255.33
2500 Support Services - Business	1,400,101.03
2600 Operation and Maintenance of Plant Services	12,339,033.30
2700 Student Transportation Services	6,242,685.99
2800 Support Services - Central	3,346,292.22
2900 Other Support Services	544,144.25
Total Support Services	\$45,458,843.77
3000 <u>Operation of Non-Instructional Services</u>	
3200 Student Activities	2,010,504.26
Total Operation of Non-Instructional Services	\$2,010,504.26
4000 <u>Facilities Acquisition, Construction and Improvement Services</u>	
4600 Existing Building Improvement Services	16,411,721.03
Total Facilities Acquisition, Construction and Improvement	\$16,411,721.03
5000 <u>Other Expenditures and Financing Uses</u>	
5100 Debt Service / Other Expenditures and Financing Uses	7,061,654.85
5200 Interfund Transfers - Out	7,000,000.00
Total Other Expenditures and Financing Uses	\$14,061,654.85
TOTAL ACTUAL EXPENDITURES & OTHER FINANCING USES	\$175,482,461.01

LEA : 124157802 Tredyffrin-Easttown SD

Printed 12/5/2022 9:02:36 AM

PSERS Salary Data (Salary Data should relate to the General Fund only)

Amount	Description	Amount
	Total Salary Base for salaries subject to PSERS withholding	65,296,252.31
	Total Federally Funded salaries subject to PSERS withholding	283,832.58

Title I Expenditure Data

Amount	Description	Amount
	Expenditures Funded with Current Title I Funds	171,230.00
	Expenditures Funded with Carry over Title I Funds	
Total Title I Expenditure Data		\$171,230.00

Title IV Revenue Data

Amount	Description	Amount
	Revenue from Title IV-A-1: Student Support and Academic Enrichment Grants	12,250.87
	Revenue from Title IV-B: 21st Century Community Learning Centers	

Title V Revenue Data

Amount	Description	Amount
	Revenue from Title V-B-2: Rural and Low-Income School Programs	
	Revenue from Title V-B-1: Small Rural School Achievement (Directly from the Federal Govt)	

1 . <u>Current Special Education Expenditures within Function 1000.\r\nSee list of exclusions in the note below.</u>	19,089,109.12
2 . <u>Current Special Education Expenditures within Function 2000.\r\nSee list of exclusions in the note below.</u>	1,386,153.56
3 . <u>Current Special Education Expenditures within Sub-Function 2100.\r\nThis data should also be included in line 2 above.\r\nSee list of exclusions in the note below.</u>	
4 . <u>Current Special Education Expenditures within Sub-Function 2200.\r\nThis data should also be included in line 2 above.\r\nSee list of exclusions in the note below.</u>	
5 . <u>Current Special Education Expenditures within Sub-Function 2700.\r\nThis data should also be included in line 2 above.\r\nSee list of exclusions in the note below.</u>	1,386,153.56
6 . <u>Current Special Education Expenditures within Sub-Function 3100.\r\nSee list of exclusions in the note below.</u>	
7 . <u>Current Special Education Expenditures within Sub-Function 3200.\r\nSee list of exclusions in the note below.</u>	

Note: The Current Special Education Expenditure amounts for each line should be calculated as follows:

- * Include the total expenditures for special education costs from all funds for the function/sub-function requested
- * Exclude data from sub-functions: 1243,1450,1500,1600,1807,2280,2450,2750,2990
- * Exclude data from objects: 322,511,512,516,561,562,564,566,592,593,594,595,596,597,700,830,899

Benefits for Staff Relative to Collective Bargaining Agreements

	OBJECT	COVERED	NOT COVERED	TOTAL
10 General Fund				
	211 Medical Insurance			
	212 Dental Insurance			
	215 Eye Care Insurance			
	216 Prescription Insurance			
	271 Self-Insurance Medical Benefits	6,455,233.00	479,532.00	6,934,765.00
	272 Self-Insurance Dental Benefits	453,277.00	33,672.00	486,949.00
	275 Self-Insurance Eye Care Benefits	116,304.00	8,640.00	124,944.00
	276 Self-Insurance Prescription Benefits	2,285,647.00	169,791.00	2,455,438.00
	FUND TOTAL	\$9,310,461.00	\$691,635.00	\$10,002,096.00
50 Enterprise Fund				
	211 Medical Insurance			
	212 Dental Insurance			
	215 Eye Care Insurance			
	216 Prescription Insurance			
	271 Self-Insurance Medical Benefits	172,397.00	26,523.00	198,920.00
	272 Self-Insurance Dental Benefits	10,853.00	1,670.00	12,523.00
	275 Self-Insurance Eye Care Benefits	2,826.00	435.00	3,261.00
	276 Self-Insurance Prescription Benefits	62,746.00	9,653.00	72,399.00
	FUND TOTAL	\$248,822.00	\$38,281.00	\$287,103.00
60 Internal Service Fund	No Self Insurance data to report			
	211 Medical Insurance			
	212 Dental Insurance			
	215 Eye Care Insurance			
	216 Prescription Insurance			
	271 Self-Insurance Medical Benefits			
	272 Self-Insurance Dental Benefits			
	275 Self-Insurance Eye Care Benefits			
	276 Self-Insurance Prescription Benefits			
	FUND TOTAL			
Total of All Funds		\$9,559,283.00	\$729,916.00	\$10,289,199.00

LEA : 124157802 Tredyffrin-Easttown SD

Printed 12/5/2022 9:02:49 AM

Function	Special Education (Prior Year)	Nonspecial Education (Prior Year)	Total (Prior Year)	Special Education (Current Year)	Nonspecial Education (Current Year)	Total (Current Year)
2120 Guidance Services	626,847.99	3,850,637.68	4,477,485.67	651,842.76	4,004,176.95	4,656,019.71
2140 Psychological Services						
2150 Speech Pathology and Audiology Services	533.02	10,127.40	10,660.42	836.93	15,901.68	16,738.61
2160 Social Work Services						
2260 Instruction and Curriculum Development Services	316,909.85	1,946,731.91	2,263,641.76	183,616.91	1,127,932.45	1,311,549.36
2350 Legal and Accounting Services	260,000.75	149,666.85	409,667.60	224,473.65	256,415.87	480,889.52
2420 Medical Services	10,427.82	10,427.82	20,855.64	9,800.03	9,800.04	19,600.07
2440 Nursing Services	63,500.49	359,836.12	423,336.61	170,296.53	235,171.41	405,467.94
2700 Student Transportation Services	1,126,008.77	3,418,013.70	4,544,022.47	1,386,153.56	3,966,615.13	5,352,768.69
Total	\$2,404,228.69	\$9,745,441.48	\$12,149,670.17	\$2,627,020.37	\$9,616,013.53	\$12,243,033.90

LEA : 124157802 Tredyffrin-Easttown SD

(PRINCIPAL AMOUNTS ONLY)								
<u>GOVERNMENTAL FUNDS/ ACTIVITIES</u>	Short-Term Borrowing	General Obligation Bonds/Notes	Authority Building Obligations	OLTD, Ext Term Fin, Leases	Other Post- Employment Benefits (OPEB)	Compensated Absences	Net Pension Liability	Total
1. Debt at Beginning of Fiscal Year		67,940,000.00		889,345.00	19,822,648.00	8,360,738.00	211,544,371.00	308,557,102.00
2. Additional Debt Incurred During Year		26,900,000.00		700,654.00	1,235,160.00	712,325.00		29,548,139.00
3. Retirements and Repayments		4,145,000.00		510,516.00		1,604,805.00	30,561,241.00	36,821,562.00
4. Debt at End of Fiscal Year		90,695,000.00		1,079,483.00	21,057,808.00	7,468,258.00	180,983,130.00	301,283,679.00
5. Accreted Interest at End Of Fiscal Year								
6. Total Debt and Accreted Interest		90,695,000.00		1,079,483.00	21,057,808.00	7,468,258.00	180,983,130.00	301,283,679.00
7. Current Portion P&I - Due within 1 year		7,077,594.00		528,191.00		27,120.00		7,632,905.00
8. Interest Paid during current fiscal year		2,360,885.85						2,360,885.85

(PRINCIPAL AMOUNTS ONLY)								
<u>PROPRIETARY FUNDS</u>	Short-Term Borrowing	General Obligation Bonds/Notes	Authority Building Obligations	OLTD, Ext Term Fin, Leases	Other Post- Employment Benefits (OPEB)	Compensated Absences	Net Pension Liability	Total
1. Debt at Beginning of Fiscal Year					528,200.00	52,250.00	2,940,783.00	3,521,233.00
2. Additional Debt Incurred During Year					30,186.00	26,760.00		56,946.00
3. Retirements and Repayments							318,216.00	318,216.00
4. Debt at End of Fiscal Year					558,386.00	79,010.00	2,622,567.00	3,259,963.00
5. Accreted Interest at End Of Fiscal Year								
6. Total Debt and Accreted Interest					558,386.00	79,010.00	2,622,567.00	3,259,963.00
7. Current Portion P&I - Due within 1 year								
8. Interest Paid during current fiscal year								

LEA : 124157802 Tredyffrin-Easttown SD

Total Principal and Interest Payments Made by Your School - All Funds

Function	Fund		Principal (910)	Principal (920)	Interest (830)	Total (Principal +Interest)	Misc Other Uses (990)
5110	10	General Fund	4,145,000.00		2,360,885.85	6,505,885.85	
5110	20	Special Revenue Funds					
5110	30	Capital Projects Funds					
5110	40	Debt Service Fund					
5110	90	Permanent Fund					
5120	10	General Fund					
5120	20	Special Revenue Funds					
5120	30	Capital Projects Funds					
5120	40	Debt Service Fund					
5140	10	General Fund	510,516.00		45,253.00	555,769.00	
5140	20	Special Revenue Funds					
5140	30	Capital Projects Funds					
5140	40	Debt Service Fund					
5140	90	Permanent Fund					
Total Debt Payments - Governmental Funds			\$4,655,516.00		\$2,406,138.85	\$7,061,654.85	

Function	Fund		Principal (910)	Principal (920)	Interest (830)	Total (Principal +Interest)
5110	50	Enterprise Fund				
5110	60	Internal Service Fund				
5120	50	Enterprise Fund				
5120	60	Internal Service Fund				
5140	50	Enterprise Fund				
5140	60	Internal Service Fund				
Total Debt Payments - Proprietary Funds						

LEA : 124157802 Tredyffrin-Easttown SD

<u>Debt Details</u> <u>Governmental Funds/ Activities</u>		Principal Amounts Only				Current Portion Due Within One Year (Principal and Interest)	Interest Paid During Fiscal Year
Debt Category	Debt Issue Date (MM/YYYY)	Debt at Beginning of Fiscal Year	Additions	Reductions / Repayments	Debt at End of Fiscal Year		
General Obligation Bonds/Notes – CIB	10/2021		26,900,000.00	270,000.00	26,630,000.00	1,067,950.00	302,699.15
General Obligation Bonds/Notes – CIB	02/2021	24,935,000.00			24,935,000.00	574,590.00	369,691.08
General Obligation Bonds/Notes – CIB	07/2020	4,770,000.00		2,345,000.00	2,425,000.00	2,456,526.00	61,501.92
General Obligation Bonds/Notes – CIB	02/2019	26,905,000.00		5,000.00	26,900,000.00	1,046,328.00	1,173,793.70
General Obligation Bonds/Notes – CIB	10/2016	11,330,000.00		1,525,000.00	9,805,000.00	1,932,200.00	453,200.00
Compensated Absences		8,360,738.00	712,325.00	1,604,805.00	7,468,258.00	27,120.00	
Other Post-Employment Benefits (OPEB)		19,822,648.00	1,235,160.00		21,057,808.00		
Net Pension Liability		211,544,371.00		30,561,241.00	180,983,130.00		
Leases		889,345.00	700,654.00	510,516.00	1,079,483.00	528,191.00	
Totals for Debt Entered:		\$308,557,102.00	\$29,548,139.00	\$36,821,562.00	\$301,283,679.00	\$7,632,905.00	\$2,360,885.85

<u>Bond Details</u> <u>Proprietary Funds</u>		Principal Amounts Only				Current Portion Due Within One Year (Principal and Interest)	Interest Paid During Fiscal Year
Debt Category	Debt Issue Date (MM/YYYY)	Debt at Beginning of Fiscal Year	Additions	Reductions / Repayments	Debt at End of Fiscal Year		
Compensated Absences		52,250.00	26,760.00		79,010.00		
Other Post-Employment Benefits (OPEB)		528,200.00	30,186.00		558,386.00		
Net Pension Liability		2,940,783.00		318,216.00	2,622,567.00		
Totals for Debt Entered:		\$3,521,233.00	\$56,946.00	\$318,216.00	\$3,259,963.00		

LEA : 124157802 Tredyffrin-Easttown SD

General Fund (10)

Section 1: Tuition/Purchased Services as Reported within Expenditure Detail	Amount
Tuition Reported in General Fund Expenditures 1000-560	5,029,568.52
Purchased Services in General Fund Expenditures 1000-594 and 1000-597	
Section 1 Total	\$5,029,568.52

Section 2: Tuition Paid to Institution Types During Fiscal Year	Tuition Paid For Nonspecial Education	Tuition Paid For Special Education	Total
1 1306 Institutions		116,039.96	116,039.96
2 Institutionalized Children's Programs			
3 Juveniles Incarcerated in Adult Facilities			
4 Residential Treatment Facilities			
5 Other Local Education Agencies			
6 Brick and Mortar Charter Schools	67,446.69		67,446.69
7 Cyber Charter Schools	746,827.77		746,827.77
8 Career and Technology Centers		681,178.00	681,178.00
9 Approved Private Schools		1,543,014.06	1,543,014.06
10 PA Chartered Schools for the Deaf and Blind			
11 Private Residential Rehabilitative Institutions			
12 Juvenile Detention Centers			
13 Special Program Jointures			
14 Other Tuition Not Included Elsewhere In This Section		1,875,062.04	1,875,062.04
Section 2 Total	\$814,274.46	\$4,215,294.06	\$5,029,568.52

LEA : 124157802 Tredyffrin-Easttown SD

Printed 12/5/2022 9:03:00 AM

Food Service / Cafeteria Operations Fund (51)

3000 Operation of Non-Instructional Services

Total

100	<u>Personnel Services – Salaries</u>	
100	Personnel Services – Salaries	962,415.06
Total Personnel Services – Salaries		\$962,415.06
200	<u>Personnel Services – Employee Benefits</u>	
210	Group Insurance – Contracted Provider	288,751.70
220	Social Security Contributions	70,168.79
230	PSERS Retirement Contributions	311,225.90
250	Unemployment Compensation	28.44
Total Personnel Services – Employee Benefits		\$670,174.83
400	<u>Purchased Property Services</u>	
430	Repairs and Maintenance Services	42,244.38
440	Rentals	19,450.00
Total Purchased Property Services		\$61,694.38
500	<u>Other Purchased Services</u>	
540	Advertising	100.00
Total Other Purchased Services		\$100.00
600	<u>Supplies</u>	
610	General Supplies	107,501.45
630	Food	1,007,840.00
640	Books and Periodicals	6,555.00
650	Supplies & Fees – Technology Related	58.00
Total Supplies		\$1,121,954.45
700	<u>Property</u>	
740	Depreciation	25,800.00
Total Property		\$25,800.00
800	<u>Other Objects</u>	
810	Dues and Fees	776.30
Total Other Objects		\$776.30
Total 3000 Operation of Non-Instructional Services		\$2,842,915.02

LEA : 124157802 Tredyffrin-Easttown SD

Printed 12/5/2022 9:03:00 AM

Food Service / Cafeteria Operations Fund (51)

3100 Food Services	<u>Elementary</u>	<u>Secondary</u>	<u>Federal</u>	<u>Total</u>
100 <u>Personnel Services – Salaries</u>				
100 Personnel Services – Salaries				962,415.06
Total Personnel Services – Salaries				\$962,415.06
200 <u>Personnel Services – Employee Benefits</u>				
210 Group Insurance – Contracted Provider				288,751.70
220 Social Security Contributions				70,168.79
230 PSERS Retirement Contributions				311,225.90
250 Unemployment Compensation				28.44
Total Personnel Services – Employee Benefits				\$670,174.83
400 <u>Purchased Property Services</u>				
430 Repairs and Maintenance Services				42,244.38
440 Rentals				19,450.00
Total Purchased Property Services				\$61,694.38
500 <u>Other Purchased Services</u>				
540 Advertising				100.00
Total Other Purchased Services				\$100.00
600 <u>Supplies</u>				
610 General Supplies				107,501.45
630 Food				1,007,840.00
640 Books and Periodicals				6,555.00
650 Supplies & Fees – Technology Related				58.00
Total Supplies				\$1,121,954.45
700 <u>Property</u>				
740 Depreciation				25,800.00
Total Property				\$25,800.00
800 <u>Other Objects</u>				
810 Dues and Fees				776.30
Total Other Objects				\$776.30
Total 3100 Food Services				\$2,842,915.02

	<u>Food Service(51)</u>	<u>Child Care Operations(52)</u>	<u>Other Enterprise(58)</u>	<u>Internal Service(60)</u>	<u>Total</u>
3000 <u>Operation of Non-Instructional Services</u>					
3100 Food Services	2,842,915.02				2,842,915.02
Total Operation of Non-Instructional Services	\$2,842,915.02				\$2,842,915.02
TOTAL ACTUAL EXPENDITURES & OTHER FINANCING USES	\$2,842,915.02				\$2,842,915.02

LEA : 124157802 Tredyffrin-Easttown SD

Printed 12/5/2022 9:03:10 AM

Fund	School	School Number	Local Personnel	Local Nonpersonnel	State Personnel	State Nonpersonnel	Federal Personnel	Federal Nonpersonnel	Total	Explanation
10										
	Beaumont El Sch	4690	5,675,355.96	1,522,339.63	1,015,920.39	272,507.29	57,220.99	15,348.78	8,558,693.04	
	Conestoga SHS	1423	29,205,420.38	8,332,871.48	5,227,933.22	1,491,630.50	294,459.58	84,015.01	44,636,330.17	
	Devon El Sch	1434	5,536,502.35	1,249,884.44	991,064.82	223,736.29	55,821.01	12,601.79	8,069,610.70	
	Hillside El Sch	1439	5,590,522.69	1,410,374.89	1,000,734.76	252,464.98	56,365.67	14,219.91	8,324,682.90	
	New Eagle El Sch	1440	6,052,517.60	1,663,628.99	1,083,434.43	297,798.87	61,023.67	16,773.31	9,175,176.87	
	Tredyffrin-Easttown MS	1421	14,101,893.04	3,286,609.44	2,524,317.55	588,321.43	142,180.37	33,136.78	20,676,458.61	
	Valley Forge El Sch	1438	6,364,498.29	1,886,432.31	1,139,280.71	337,681.91	64,169.17	19,019.69	9,811,082.08	
	Valley Forge MS	4689	14,471,818.58	3,548,994.37	2,590,536.29	635,289.80	145,910.10	35,782.24	21,428,331.38	
Total			86,998,528.89	22,901,135.55	15,573,222.17	4,099,431.07	877,150.56	230,897.51	130,680,365.75	